

An industry-standard cabinet solution that supports and protects rack-mount servers, network equipment and other mixed-use applications in enterprise data centers, computer rooms and network facilities.

GF-Series GlobalFrame® Gen 2 Cabinet System

PATENTED

VERTICAL EXHAUST DUCT

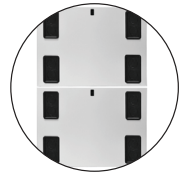


ADVANTAGES

Two Configurations
Perforated doors or Vertical Exhaust Duct supports front-to-rear or front-to-top airflow



Control Airflow
Perforated doors maximize airflow, and grommet sealed cable openings minimize leakage



Improved Slide Design
Accessories, like equipment mounting rails, slide for quick and easy adjustment



KEY FEATURES

- Industry-standard sizes make selection easy
- Two configurations support front-to-rear or front-to-top airflow
- Wide range of thermal and cable management accessories
- Fully compatible with aisle containment solutions

SPECIFICATIONS

Includes	Welded steel and bolted aluminum four-post frame
	Equipment mounting rails, two pairs
	Grounding/bonding system and ground lug
	Leveling feet and casters
	Floor attachment brackets
	Baying kit, for 600 mm or 24" spacing
Equipment Space	PDU brackets, one pair, for mounting two vertical CPI PDUs
	Equipment mounting hardware, (50) M6 cage nuts and screws
	See Height, Width and Depth tables under Ordering Information/Dimensions
Load Capacity, 6-Slide Frame (per UL2416)	3000 lb (1360 kg), static load on leveling feet
	2250 lb (1020 kg), rolling load on casters
	2000 lb (907.2 kg), shipping on shock pallet
Load Capacity, 4-Slide Frame (per UL2416)	2500 lb (1134 kg), static load on leveling feet
	2000 lb (907.2 kg), rolling load on casters
Certifications	EIA-310-E compliant
	UL Listed 2416, NWIN
Material	Steel frame, rails and panels
	Aluminum slides
	Plastic grommets/seals
Finish	Epoxy-polyester hybrid powder coat paint on frame, rails, panels in Black or Glacier White Grommets/seals, door handles/hinges are black
Environment	For indoor use only, in environmentally controlled areas, not harsh environments
Construction	Welded/bolted frame
	Mounting rails bolt to frame

Availability: Global

US & Canada

+1-800-834-4969
Toronto, Ontario, Canada
+905-850-7770
chatsworth.com
techsupport@chatsworth.com

Latin America

+52-55-5203-7525
Toll Free within Mexico
01-800-01-7592
chatsworth.com.co

Europe

+44-1628-524-834
chatsworth.com

Middle East & Africa

Dubai, UAE
+971-4-2602125
chatsworth.ae

Asia Pacific

+86 21 6880-0266
chatsworth.com.cn



CHATSWORTH
PRODUCTS

The GF-Series GlobalFrame® Gen 2 Cabinet System is an industry-standard server and network equipment storage solution for data centers, computer rooms or network facilities.

Available in a select set of industry-standard sizes, GF-Series GlobalFrame features two specific configurations that meet most application requirements. Standard cabinets with perforated front and rear doors support front-to-rear airflow for hot aisle/cold aisle or aisle containment applications. High-density cabinets with perforated front and solid rear doors and a top-mount Vertical Exhaust Duct, guide hot exhaust air away from the cabinet to support a closed return application. Both configurations cover the basics with adjustable-depth Z-shaped mounting rails that help block bypass airflow around equipment, cable openings in the top panels that are large enough for high-amperage PDU power plugs, casters to easily position the cabinet and locking doors and side panels to secure equipment.

Additionally, CPI's second generation GF-Series GlobalFrame features new size and finish options, enhanced panels and doors and smarter airflow management. The frame is now available in a standard 52U height, 700 mm width and 1100 mm depth to maximize space utilization, and a Glacier White finish that reflects more light. Maximum front-to-rear rail depths are increased to support deeper equipment. Top and bottom panels include snap on plastic grommets to seal cable openings. Perforated areas on the doors are 78% open to maximize airflow, and the improved Air Dam accessory (ordered separately), which creates an airflow barrier around the rails to block bypass air inside the cabinet, allows rails to be adjusted to any depth.

Combine the GF-Series GlobalFrame with thermal and cable management accessories to create a solution that fits your requirements. See inside for product details. Contact CPI Technical Support for configuration assistance.

USE WITH

- Air Dam
- Air Director
- Equipment Rail Grommet Kit
- Bottom Panel
- Finger Cable Manager
- Ring Cable Manager
- Cable Lashing Bracket
- Full Height Dual PDU Bracket
- Klik-Nut Hardware Kit

RELATED PRODUCTS

- Snap-In Filler Panels
- Vertical PDUs and Power Strips

SPECIFICATIONS

Doors/Lock Kits	Perforated front door
	Choice of solid or double perforated rear door
	Perforated area is 78% open
	Solid door includes a perimeter seal
	Front door opens to 120° when bayed, 145° when not bayed
	Rear door opens to 180° when bayed or not bayed
	Hinge pins allow easy removal during maintenance
	Reversible to open from the right or left, must move hinges/latch
Side Panels	Interchangeable front or rear, must move hinges/latch
	Swing handle with keyed lock
	Order with cabinet or as service parts
	Solid, two-piece panels (half height, full depth)
	Individual top/bottom panels on 6-slide frame
	Stacking top/bottom panels on 4-slide frame
Top Panel	Recessed spring-loaded latch with lock, keyed to match doors
	Bay cabinets with panels installed or removed
	Panels with cable openings are available as accessories
	Choice of standard panel or Vertical Exhaust Duct
	Standard panel is a one-piece solid panel with four large grommets over cable openings, one per corner
Bottom Panel	Grommets are plastic, snap on, seal cable openings and can be cut to pass cables
	Unsealed openings are 4.5"W x 9.0"D (114 mm x 228 mm), wide enough for large PDU plugs
	Vertical Exhaust Duct includes the duct and a front panel with two cable openings and grommets, one per corner
	Select duct size to match the distance between the top of the cabinet and the overhead drop ceiling; the duct features easy adjustment and a flexible top seal
Equipment Support	Included with cabinets that have a Vertical Exhaust Duct top panel
	Bottom panel is a two-piece solid panel with two large grommets over cable openings in the back corners
	Grommets are plastic, snap on, seal cable openings, and can be cut to pass cables
	Unsealed cable openings are 4.5"W x 9.0"D (114 mm x 228 mm), wide enough for large PDU plugs
Grounding/Bonding	Two pairs of mounting rails in the cabinet
	Adjustable depth, rails slide front-to-back, marks on frame for easy vertical alignment
	1-3/4"H (44.45 mm) U spacing, marked and numbered on all rails
	19"W, EIA-310-E Universal 5/8"-5/8"-1/2" (15.9 mm – 15.9 mm – 12.7 mm) vertical hole spacing
PDU Brackets	Square-punched mounting holes accept Klik-Nut Hardware Kits and standard cage nuts
	Includes 50 each M6 cage nuts and screws with square-punched rails
	Mounting rails, top panel, side panels and doors are electrically bonded to the cabinet frame
	Prepared location for ground lug at the top and bottom of the cabinet frame
PDU Brackets	A grounding lug is included to attach the frame to ground
	One pair of brackets and installation hardware
	Use with CPI Vertical Power Strips or PDUs
	Supports two 2.2"W (51 mm) or narrower PDUs side-by-side or one PDU up to 3.5"W (89 mm)
	Attaches to the frame in either back corner
PDU Brackets	Provides tool-less attachment points spaced 61.25" (1556 mm) apart on all cabinets
	Provides alternate tool-less attachment points spaced 64.75" (1645 mm) on cabinets 44U or taller
	Full height bracket with cable tie points is also available as an accessory

ORDERING INFORMATION

Use the part number configurator below to select a GF-Series GlobalFrame Cabinet. Choose the Height, Width, Depth, Side Panel Style, Configuration, Color, and Frame Style. Example part number: GF-1A100-CB

Complete Matrix:

The complete product matrix includes all options available.

GF - H W D S C - C F

600 mm, 700 mm, 800mm Standard Cabinets

	1. Height				2. Width			3. Depth/Frame				w/Doors		4. Side Panels		5. Configuration		6. Color		7. Frame	
		U	in	mm		in	mm		in	mm		in	mm		mm	Description	Description	Description	Description		
GF-	1	42	79.4	2016	A	23.6	600	1	31.5	800	35.4	900	0	No Sides	0	Standard Top Panel/Standard Pallet	C	Black	A	4-Slide	
	2	45	84.6	2149	D	27.6	700	2	39.4	1000	43.3	1100	1	One Side			E	Glacier White	B	6-Slide	
	3	48	89.9	2282	C	31.5	800	3	41.3	1050	45.3	1150	2	Two Sides							
	4	52	96.9	2460				5	43.3	1100	47.3	1200									
							4	47.2	1200	51.2	1300										

Notes:
 Height includes casters.
 Frame depth does not include doors. See page 5 for detailed dimensions.
 Includes Perforated Front and Rear Doors.

PATENTED
 VERTICAL EXHAUST DUCT

600 mm, 700 mm, 800mm Vertical Exhaust Duct Cabinets

	1. Height				2. Width			3. Depth/Frame				w/Doors		4. Side Panels		5. Configuration		6. Color		7. Frame	
		U	in	mm		in	mm		in	mm		in	mm		mm	Description	Description	Description	Description		
GF-	1	42	79.4	2016	A	23.6	600	3	41.3	1050	45.3	1150	0	No Sides	1	Duct 20-34" (508-863 mm)/ Standard Pallet	C	Black	A	4-Slide	
	2	45	84.6	2149	D	27.6	700	5	43.3	1100	47.3	1200	1	One Side			E	Glacier White	B	6-Slide	
	3	48	89.9	2282	C	31.5	800	4	47.2	1200	51.2	1300	2	Two Sides	2	Duct 34-60" (863-1523 mm)/ Standard Pallet					
	4	52	96.9	2460																	

Notes:
 Height includes casters. Does not include Vertical Exhaust Duct.
 Frame depth does not include doors. See page 5 for detailed dimensions.
 Includes Perforated Front Door, Solid Rear Door, Vertical Exhaust Duct and Bottom Panel.

750 mm Standard and Vertical Exhaust Duct Cabinets

	1. Height				2. Width			3. Depth/Frame				w/Doors		4. Side Panels		5. Configuration		6. Color		7. Frame	
		U	in	mm		in	mm		in	mm		in	mm		mm	Description	Description	Description	Description		
GF-	1	42	79.4	2016	B	29.5	750	3	41.3	1050	45.3	1150	0	No Sides	0	Standard Top Panel/Standard Pallet	C	Black	B	6-Slide	
	2	45	84.6	2149				5	43.3	1100	47.3	1200	1	One Side	1	Duct 20-34" (508-863 mm)/ Standard Pallet	E	Glacier White			
	3	48	89.9	2282				4	47.2	1200	51.2	1300	2	Two Sides	2	Duct 34-60" (863-1523 mm)/ Standard Pallet					

Notes:
 Height includes casters. Does not include Vertical Exhaust Duct.
 Frame depth does not include doors. See page 5 for detailed dimensions.
 Includes Perforated Front Door, Solid Rear Door, Vertical Exhaust Duct and Bottom Panel.

600 mm, 700 mm, 750 mm & 800 mm Shock Pallet Cabinets

	1. Height				2. Width			3. Depth/Frame				w/Doors		4. Side Panels		5. Configuration		6. Color		7. Frame	
		U	in	mm		in	mm		in	mm		in	mm		mm	Description	Description	Description	Description		
GF-	1	42	79.4	2016	A	23.6	600	3	41.3	1050	45.3	1150	0	No Sides	3	Standard Top Panel/Shock Pallet	C	Black	B	6-Slide	
	2	45	84.6	2149	D	27.6	700	5	43.3	1100	47.3	1200	1	One Side			E	Glacier White			
					B	29.5	750	4	47.2	1200	51.2	1300	2	Two Sides							
				C	31.5	800															

Notes:
 Height includes casters.
 Frame depth does not include doors. See page 5 for detailed dimensions.
 Reusable Packaging.



For the full line of cabinet configurations, use the complete product matrix or log on to the CPI Configurator on our website at www.chatsworth.com. For additional assistance, contact Technical Support at 800-843-4969.

DIMENSION TABLES

Height Dimensions - in (mm)			
Rack Mount Spaces (U)	Overall with Casters	Frame Only No Casters	Front Opening
42	79.4 (2016)	77.4 (1965)	73.9 (1876)
45	84.6 (2149)	82.6 (2099)	79.1 (2010)
48	89.9 (2282)	87.9 (2232)	84.4 (2143)
52	96.9 (2460)	94.9 (2410)	91.4 (2321)

Casters add approximately 2" (51 mm) to frame and are factory installed on the cabinet. Brush sealed grommets in the top panel add about 3/8" to the height of the cabinet.

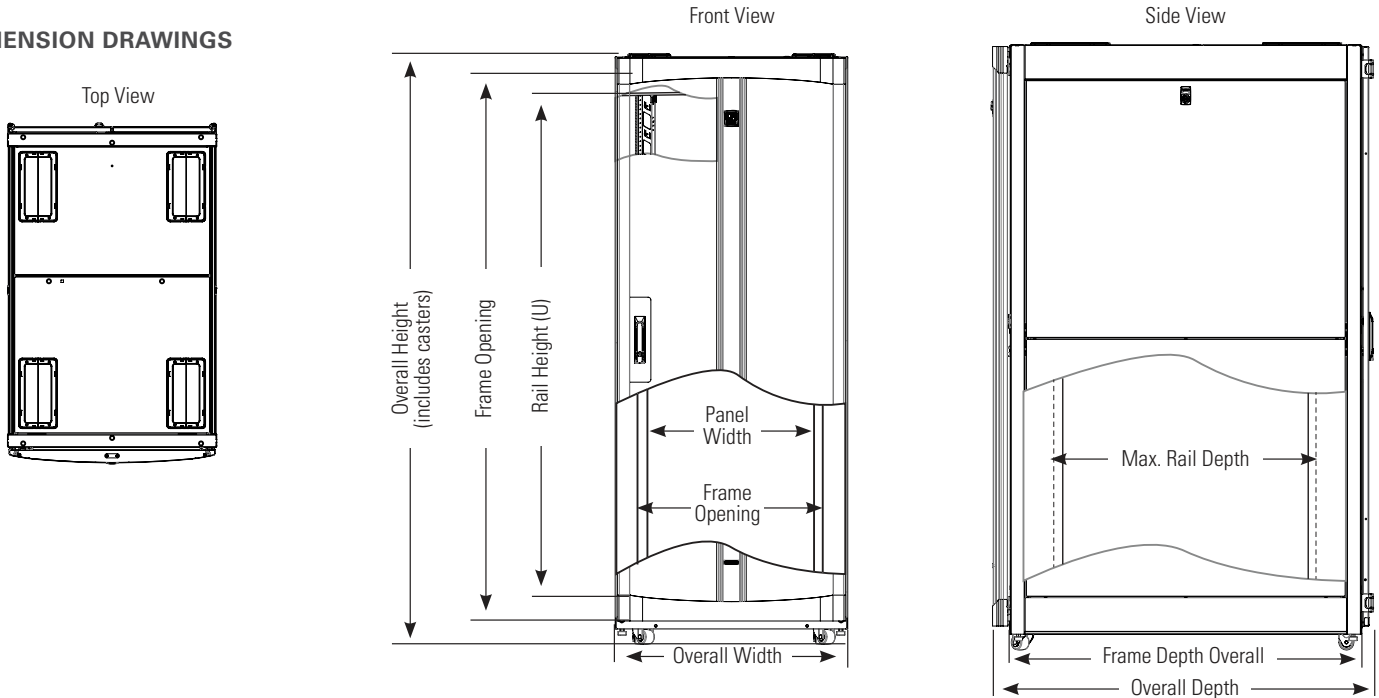
Width Dimensions - in (mm)			
Nominal Width	Overall with Side Panels	Front Opening	Rack-Mount Panel Width
600	23.6 (600)	19.6 (498)	19 (482.6)
700	27.6 (700)	23.5 (598)	19 (482.6)
750	29.5 (750)	25.5 (648)	19 (482.6)
800	31.5 (800)	27.5 (698)	19 (482.6)

Mounting Rail clearance is 17.8" (452 mm), mounting hole spacing is 18.3" (465 mm).

Depth Dimensions - in (mm)			
Nominal Depth	Overall with Doors	Frame Only No Doors	Maximum Rail Depth
800	35.4 (900)	31.5 (800)	29.3 (745)
1000	43.3 (1100)	39.4 (1000)	37.2 (945)
1050	45.3 (1150)	41.3 (1050)	39.2 (995)
1100	47.3 (1200)	43.3 (1100)	41.1 (1045)
1200	51.2 (1300)	47.2 (1200)	45.1 (1145)

Front Door is approximately 2.4"D (61 mm), and Rear Door is approximately 1.5"D (38 mm) with hinges/latches. Minimum rail depth is 7" (178 mm), each rail is 3.5"D (89 mm). Rail depth is reduced when vertical accessories are placed in corners.

DIMENSION DRAWINGS



Installation Products

Installation products include equipment mounting hardware, concrete floor anchors and raised floor grommets. Be sure to secure your cabinets to the floor and to seal openings in panels and the raised floor.

Part Number	Description	Shipping Weight lb (kg)
39150-001	Leveling Feet Height Adjustment Tool, 5 mm Hex Ball Driver, 12"L (300 mm)	1 (0.5)
76543-001*	Clik-Nut Hardware Kit, Cage Nuts, Screws, M6, 25 Pack, Zinc	1 (0.5)
12637-001	Mounting Hardware Kit, Cage Nuts, Screws, M6, 25 Pack, Gold	1 (0.5)
12638-001	Mounting Hardware Kit, Cage Nuts, Screws, #10-32, 25 Pack, Zinc	1 (0.5)
12639-001	Mounting Hardware Kit, Cage Nuts, Screws, #12-24, 25 Pack, Black	1 (0.5)

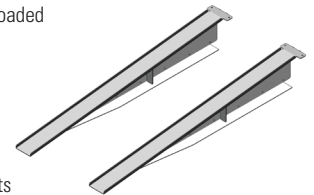
Baying Kits and Floor Mounting Brackets are included with each cabinet.

* Additional thread size and quantities available.

Ramp Kit for Shock Pallet Cabinets

Ramp Kit includes a pair of steel ramps used to roll a loaded cabinet off of a shock pallet.

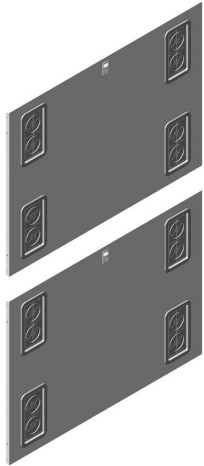
- Durable, welded steel construction for repeated use
- 0.7" H (17.4 mm) sides control casters to prevent the cabinet from rolling off ramp
- Gradual, 4.5'L (1.4 m) incline for controlled exit
- Includes: one pair of steel, black finish ramps
- Order one Ramp Kit per site for Shock Pallet Cabinets



Part Number	Description	Shipping Weight lb (kg)
39207-701	Ramp Kit for Shock Pallet Cabinets, Black	26 (11.8)

THERMAL MANAGEMENT ACCESSORIES

To optimize cooling performance in your facility, you must isolate hot and cold air, guide cold air to equipment and remove hot air from equipment. Thermal management accessories play a critical role in overall performance by controlling airflow inside the cabinet.



Side Panel with Grommet Sealed Cable Openings

Side Panel With Grommet Sealed Cable Openings feature multiple grommet sealed cable openings that allow cables to enter the side of the cabinet while containing exhaust air within each cabinet.

- Two-piece design with top and bottom halves for easier handling
- Eight cable openings per side, four per half-height panel, one per corner, are 4.5"W x 9"D (114 mm x 228 mm) without grommet, sized for large power plugs
- Grommets are plastic, snap on, seal cable openings and can be cut to pass cables
- Tool-less removal, drop in design with integrated locking spring latch secures the side panel to the cabinet frame
- Integrated grounding tabs to electrically bond the side panel to cabinet frame
- Includes: Side panel (two halves, with grommets), installation hardware, set of keys
- Material: Steel panels, plastic grommets
- Finish: Black or Glacier White; grommets are black
- Select part number to match the frame style, height, and depth



Air Dam

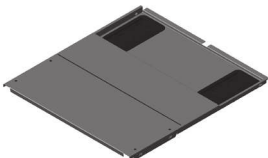
Air Dam blocks airflow around the sides and top of the equipment mounting space, so cold air passes through equipment and hot air does not recirculate around equipment.

- Use with Equipment Rail Grommet Kit and Bottom Panel
- 600 mm attaches by wrapping around flange, 700, 750 & 800 mm attaches by snapping onto half lance
- Requires a minimum rail setback of 1.3" (33 mm) from the front of the cabinet frame; maximum rail setback is 9.8" (248 mm) without Bottom Panel
- Flexible seal against top and side panels
- Includes: Top, bottom and side baffles; installation hardware
- Material: Steel, sheet metal
- Finish: Black or Glacier White; seals are black
- Select part number to match the frame style, width, usable height and color of the cabinet

Bottom Panel

Bottom Panel with grommet sealed cable openings blocks airflow under the cabinet, so hot air is contained in the rear of the cabinet when the cabinet frame is elevated on leveling feet or casters.

- Upgrade for Standard Cabinets; use with Air Dam
- Solid panel with two large grommet sealed cable openings in the back corners
- Grommets are plastic, snap on, seal cable openings and can be cut to pass cables
- Unsealed openings are 4.5"W x 9.0"D (114 mm x 228 mm), wide enough to pass large PDU plugs
- Attaches to the bottom slide on the cabinet, install before rack-mount equipment
- Two piece panel for easier installation, adjusts to fit cabinets 39.4"D (1000 mm) or deeper
- Includes: Bottom panel, grommets, installation brackets and hardware
- Material: Steel panels, plastic grommets
- Finish: Black or Glacier White; grommets are black
- Select part number to match the width and color of cabinet



Part Number		Height (U)				Cabinet Frame Depth in (mm)	Shipping Weight lb (kg)
		42	45	48	52		
6-Slide	4-Slide	Frame Style					
39037	39033	-X00	-X51	-XAC	-XDL	31.5 (800)	40 (18.1)
		-X08	-X59	-XAL	-XDW	39.4 (1000)	52 (23.6)
		-X10	-X61	-XAN	-XEA	41.3 (1050)	55 (24.9)
		-X12	-X63	-XAR	-XEC	43.3 (1100)	58 (26.3)
		-X16	-X67	-XAW	-XEG	47.2 (1200)	64 (29.0)

X=Color: C=Black, E=Glacier White. Shipping Weights are for 4-Slide, 52U panels. 6-Slide panels are approximately 8 lb (3.6 kg) lighter.

Part Number - Cabinet Width For 6-Slide Frame Style				Height (U)	Shipping Weight lb (kg)
23.6"W (600 mm)	27.6"W (700 mm)	29.5"W (750 mm)	31.5"W (800 mm)		
39085-X00	39085-X11	39085-X33	39085-X22	42	11 (5.0)
39085-X03	39085-X14	39085-X36	39085-X25	45	11 (5.0)
39085-X06	39085-X17	39085-X39	39085-X28	48	12 (5.4)
39085-X10	39085-X21	N/A	39085-X32	52	13 (5.9)
Part Number - Cabinet Width For 4-Slide Frame Style				Height (U)	Shipping Weight lb (kg)
23.6"W (600 mm)	27.6"W (700 mm)	29.5"W (750 mm)	31.5"W (800 mm)		
39130-X00	39130-X11	N/A	39130-X22	42	11 (5.0)
39130-X03	39130-X14	N/A	39130-X25	45	12 (5.4)
39130-X06	39130-X17	N/A	39130-X28	48	12 (5.4)
39130-X10	39130-X21	N/A	39130-X32	52	13 (5.9)

X=Color; C=Black, E=Glacier White. Shipping Weights are 800 mm kits.

Part Number - Cabinet Width				Depth in (mm)	Shipping Weight lb (kg)
23.6"W (600 mm)	27.6"W (700 mm)	29.5"W (750 mm)	31.5"W (800 mm)		
39080-X00	39080-X01	39080-X03	39080-X02	≥39.4 (1000)	29 (13.2)

X=Color; C=Black, E=Glacier White. Shipping Weights are 800 mm kits.

THERMAL MANAGEMENT ACCESSORIES (CONTINUED)



PATENTED
VERTICAL
EXHAUST DUCT

Air Director

Air Director is an angled panel used at the back of cabinets with Vertical Exhaust Duct top panels to guide hot air towards the top of the cabinet.

- Universal, three piece design adjusts in width to fit all cabinets
- Attaches to the bottom slide on the cabinet, adjusts in depth
- U.S. patents apply to this product. For details, visit www.chatsworth.com/patents
- Includes: director, installation hardware
- Material: Steel
- Finish: Black or Glacier White
- Select part number to match color of the cabinet



Equipment Rail Grommet Kit

Set of plastic grommets that cover cable openings in the equipment mounting rails in the wider cabinets to block airflow around equipment.

- Grommets are plastic, snap on, seal cable openings and can be cut to pass cables
- Includes: (8) grommets
- Material: Plastic



Cable Port Brush Kit

Cable Port Brush Kit is a pair of snap on brush covers that can be used to replace the plastic grommets included with the top, bottom and side panels to form a better seal for cable openings.

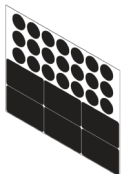
- Easy addition and removal of cables through brush opening
- Brushes form a tight seal around cables to minimize air leakage through cable openings
- Split, two-piece, snap on design for easy installation around cable bundles
- Includes: (2) brush covers
- Material: Plastic housing, nylon brushes



Bay Seal Kit

Bay Seal Kit is only used with 23.6"W (600 mm) cabinets when the cabinets are bayed to align with 24"W (610 mm) floor tiles. The bay seal kit fills the small gaps left between cabinets.

- Flexible plastic insert that blocks airflow between cabinets
- Includes: Side baffles, cut to length
- Material: Plastic
- Finish: Black only
- Select part number to match the usable height of the cabinet



Seal Kit

Cover unused holes in the frame for hinges and installation brackets to prevent bypass airflow.

- Pre-cut, plastic, color-matched, adhesive backed labels for easy attachment to the cabinet
- Tough, heat resistant material and adhesive for long life
- Each kit includes 12 sheets; each sheet includes 21 round labels and six rectangular labels
- Round labels are .75" (19 mm) diameter. Rectangular labels are 1.3" x 2.2" (34 mm x 55 mm).
- Material: Thermoplastic polycarbonate film
- Finish: Black or Glacier White
- Select to match the color of the cabinet

GF-Series GlobalFrame® Gen 2 Cabinet System - Thermal Management Accessories		
Part Number	Description	Shipping Weight lb (kg)
39107-X00	Air Director	10 (4.5)
39133-001*	Equipment Rail Grommet Kit, Pack of 8	2 (0.9)
25190-001	Cable Port Brush Kit, Pack of 2, Black	2 (0.9)
39137-700	Bay Seal Kit, 42U, Black	5 (2.3)
39137-703	Bay Seal Kit, 45U, Black	5 (2.3)
39137-706	Bay Seal Kit, 48U, Black	5 (2.3)
39137-710	Bay Seal Kit, 52U, Black	5 (2.3)
39076-X00	Seal Kit	1 (0.5)

X=color; C=Black, E=Glacier White.

* Use with 27.6"W (700 mm) or 31.5"W (800 mm) rails.

ADDITIONAL ACCESSORIES

Additional Accessories - Thermal Management		
Part Number	Description	Shipping Weight lb (kg)
34537-X00	Snap-In Filler Panel, 1U x 19"W (482.6 mm), Single	14 (6.4)
34537-X01	Snap-In Filler Panel, 1U x 19"W (482.6 mm), 6 Pack	14 (6.4)
34537-X02	Snap-In Filler Panel, 1U x 19"W (482.6 mm), 50 Pack	14 (6.4)
34538-X00	Snap-In Filler Panel, 2U x 19"W (482.6 mm), Single	21 (9.5)
34538-X01	Snap-In Filler Panel, 2U x 19"W (482.6 mm), 6 Pack	21 (9.5)
34538-X02	Snap-In Filler Panel, 2U x 19"W (482.6 mm), 50 Pack	21 (9.5)
Raised Floor Grommet		
13671-001	Raised Floor Grommet, Each, with Hardware, Black	2 (1.4)
13671-002	Raised Floor Grommet, with Hardware, 10 Pack, Black	18 (8.2)

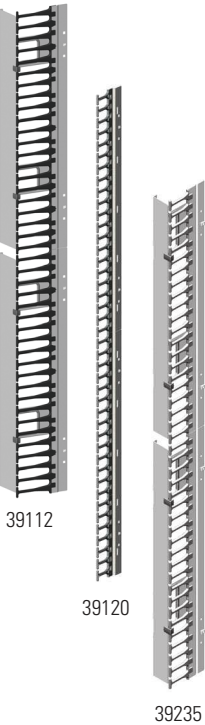
X=color; O=Black, E=Glacier White.

Additional Accessories - Electronic Locking Systems				
Part Number - By Door Style			Description	Shipping Weight lb (kg)
Front Door Single, Perf.	Rear Door Single, Perf.	Rear Door Double, Perf.		
Electronic Lock Kit, System 1000				
39224-C00	39223-C00	39225-C99	ELS Kit, System 1000	3 (1.4)
Electronic Lock Kit, System 1500				
39224-C01	39223-C01	39228-C99	ELS Kit, System 1500	3 (1.4)

Note: These part numbers are retrofit electronic lock kits that replace the swing handle on the cabinet door. To order this lock kit pre-installed on the cabinet door, use the CPI Product Configurator on the CPI website.

CABLE MANAGEMENT ACCESSORIES

Keep network, KVM and power cables separate and organized using the following cable management accessories.



Finger Cable Manager

Finger Cable Manager attaches to the equipment mounting rail creating a pathway for cables next to the rail, and includes plastic T-shaped cable guides (fingers) that organize cables by U. Two depths are available.

- Attaches to and adjusts with mounting rails, fully compatible with Air Dam
- Plastic, T-shaped fingers organize cables by U
- Openings between fingers align with each U on the mounting rail
- Pass up to 48 cables per U space through openings on Finger Cable Manager
- Pass up to 24 cables per U space through openings on Finger Cable Manager, Short
- Hinged cover included with managers in wider cabinets, cover snaps closed to secure cables
- Includes: Finger Cable Manager, cover (P/Ns 39112-XXX and 39235-XXX only), installation hardware
- Material: Steel panels, plastic guides and latches
- Finish: Black or Glacier White; guides and latches are black
- Select part number to match the frame style, width, usable height and color of the cabinet

Part Number - Cabinet Width				Height (U)	Shipping Weight lb (kg)
23.6"W (600 mm)	27.6"W (700 mm)	29.5"W (750 mm)	31.5"W (800 mm)		
Finger Cable Manager					
N/A	39112-X11	39112-X33	39112-X22	42	22 (10.0)
N/A	39112-X14	39112-X36	39112-X25	45	23 (10.4)
N/A	39112-X17	39112-X39	39112-X28	48	25 (11.3)
N/A	39112-X21	N/A	39112-X32	52	26 (11.8)
Finger Cable Manager, Short					
39120-X00	39235-X11	39235-X33	39235-X22	42	21 (9.5)
39120-X03	39235-X14	39235-X36	39235-X25	45	22 (10.0)
39120-X06	39235-X17	39235-X39	39235-X28	48	23 (10.4)
39120-X10	39235-X21	N/A	39235-X32	52	24 (10.9)

X=Color: C=Black, E=Glacier White. Shipping Weights are for 800 mm kits.

Inside Dimensions, Usable Internal Cable Area, Rails Setback, U Opening					
Cabinet Width	Width in (mm)	Depth in (mm)	Cable Area in ² (mm ²)	Rail Setback in (mm)	U Opening in ² (mm ²)
Finger Cable Manager					
27.6 (700)	2.6 (66)	8.4 (213)	21.8 (14 060)	10.1 (257)	6.6 (4260)
29.5 (750)	3.7 (94)	8.4 (213)	31.0 (20 000)	10.1 (257)	6.6 (4260)
31.5 (800)	4.6 (117)	8.4 (213)	38.6 (24 900)	10.1 (257)	6.6 (4260)
Finger Cable Manager, Short					
23.6 (600)	0.5 (13)	6.0 (150)	3 (1900)	7.6 (193)	3.5 (2260)
27.6 (700)	2.6 (66)	6.0 (150)	15.6 (10 060)	7.6 (193)	3.5 (2260)
29.5 (750)	3.7 (94)	6.0 (150)	21.6 (13 940)	7.6 (193)	3.5 (2260)
31.5 (800)	4.6 (117)	6.0 (150)	27.8 (17 940)	7.6 (193)	3.5 (2260)

Rail setback is the minimum distance required between the front edge of the cabinet frame and the front edge of the equipment mounting rail. U opening is the size of the side opening at each U space between T-shaped fingers.



Ring Cable Manager

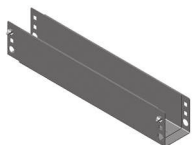
Ring Cable Manager is independent of the equipment mounting rails creating a separate vertical pathway for cables and includes plastic cable rings to organize cables.

- Attaches to the frame, adjusts in depth independent of the mounting rails
- Rings have an opening on the front for easy addition or removal of cables
- Includes: Brackets, rings, installation hardware
- Material: Steel brackets, plastic rings
- Finish: Black or Glacier White; rings are black
- Select part number to match the frame style, width, usable height and color of the cabinet

Inside Dimensions, Usable Internal Cable Area, Rail Setback					
Cabinet Width	Width in (mm)	Depth in (mm)	Cable Area in ² (mm ²)	Rail Setback in (mm) 6-Slide	Rail Setback in (mm) 4-Slide
23.6 (600)	.9 (29)	3.3 (84)	2.9 (1870)	7.6 (193)	9.1 (231)
27.6 (700)	2.3 (58)	5.5 (140)	12.6 (8130)	8.2 (208)	8.2 (208)
31.5 (800)	4.2 (107)	3.5 (89)	14.7 (9480)	6.4 (163)	6.4 (163)

Part Number - Cabinet Width				Height (U)	Shipping Weight lb (kg)
For 6-Slide Frame Style					
23.6"W (600 mm)	27.6"W (700 mm) & 29.5"W (750 mm)	31.5"W (800 mm)			
39087-X00	39088-X00	39089-X00		42	13 (5.9)
39087-X03	39088-X03	39089-X03		45	14 (6.4)
39087-X06	39088-X06	39089-X06		48	14 (6.4)
39087-X10	39088-X10	39089-X10		52	15 (6.8)
Part Number - Cabinet Width				Height (U)	Shipping Weight lb (kg)
For 4-Slide Frame Style					
23.6"W (600 mm)	27.6"W (700 mm) & 29.5"W (750 mm)	31.5"W (800 mm)			
39127-X00	39128-X00	39129-X00		42	14 (6.4)
39127-X03	39128-X03	39129-X03		45	14 (6.4)
39127-X06	39128-X06	39129-X06		48	15 (6.8)
39127-X10	39128-X10	39129-X10		52	15 (6.8)

X=Color: C=Black, E=Glacier White. Shipping Weights are 800 mm kits.



Front-to-Rear Cable Manager

Front-to-Rear Cable Manager attaches to the back of equipment mounting rails creating a front-to-rear pathway between the front and rear mounting rails for cables.

- For use on 27.6"W (700 mm) and 31.5"W (800 mm) cabinets
- Mounting locations behind cable openings on each rail
- Attaches to mounting rails and extends to match depth
- Creates a 2.5"W (64 mm) x 3"D (78 mm) front-to-rear pathway for cables
- Includes: Cable Manager, installation hardware
- Material: Steel panels, Finish: Black or Glacier White
- Select part number to match the color of the cabinet

Part Number - Cabinet Width				Rail Depth Range in (mm)	Shipping Weight lb (kg)
23.6"W (600 mm)	27.6"W (700 mm)	29.5"W (750 mm)	31.5"W (800 mm)		
N/A	39077-X00	39077-X00	39077-X00	22-34 (558-863)	5 (2.3)

X=Color: C=Black, E=Glacier White.

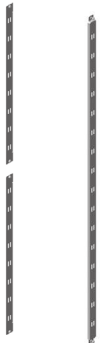
CABLE MANAGEMENT ACCESSORIES (CONTINUED)



Full Height Dual PDU Bracket

Full Height Dual PDU Bracket supports two vertical PDUs side-by-side and has multiple slots for CPI Saf-T-Grip® Straps or tie wraps to secure cords to the bracket.

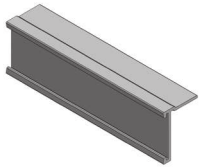
- Attaches to the frame, adjusts in depth independent of the mounting rails
- Available in two widths: Dual and Wide
- Dual bracket is 4.8"W (121 mm) and supports two PDUs up to 2.2"W (51 mm) side-by-side
- Dual bracket supports most CPI eConnect® PDUs and power strips side-by-side
- Wide bracket is 5.8"W (147 mm) and supports two PDUs up to 2.7"W (69 mm) side-by-side
- Wide bracket is required to mount two 6-Breaker eConnect PDUs (series P/Nx PX-3XXXX), side-by-side
- Tool-less mounting on 28" (711 mm), 61.25" (1556 mm) or 64.75" (1645 mm) centers
- Includes: Brackets, installation hardware, order Saf-T-Grips or cable ties separately
- Material: Steel; Finish: Black or Glacier White



Cable Lashing Bracket

Cable Lashing Bracket creates a simple, separate vertical pathway for a small bundle of cables and has multiple slots for CPI Saf-T-Grip Straps or tie wraps to secure cables to the bracket.

- Attaches to the frame, adjusts in depth independent of the mounting rails
- Bracket is 1.6"W (41 mm)
- Includes: Brackets, installation hardware, order Saf-T-Grips or cable ties separately
- Material: Steel
- Finish: Black or Glacier White
- Select part number to match the frame style, usable height and color of the cabinet



Label Holder Kit

Label Holder Kit includes 24 each, 1"H x 4"W (25 mm x 100 mm) label holders that can be attached to the front or sides of cabinets and hold labels for identifying the cabinet.

- Plastic, L-shaped, adhesive backed label holder for easy attachment to the cabinet
- Tough, heat resistant material and adhesive for long life
- Each kit includes 24 label holders
- 1"H x 4"W (25 mm x 100 mm) surface for labels; labels not included
- Material: Rigid PVC plastic, UL94-V0, Finish: Black



Equipment Support Bracket

mounts to the rear rails to of the N Series TeraFrame to provide additional support and safety for deep or heavy electronic equipment panels mounted on CPI racks or cabinets.

- Supports equipment weighing up to 60 lbs (27.2 kg)
- Made of Strong, lightweight aluminum
- Overall depth is 13" (330 mm); chassis support lip is 1.5" W (38 mm)
- Fits all EIA Standard, hole-patterned equipment mounting rails, cabinets and four-post racks
- Eliminates equipment sag caused by cantilevered mounting

Service Parts

Service parts include mounting rails, top panels, side panels, doors and door lock kits and are used as replacement parts or to upgrade cabinets as applications change. The GF-Series GlobalFrame Service Parts Cut Sheet is available for download at www.chatsworth.com/GF-Series, or contact CPI Technical Support at 800-834-4969 or techsupport@chatsworth.com for assistance.

For product CSI Specs, visit the Support & Downloads page on www.chatsworth.com.

Part Number		Height (U)	Shipping Weight lb (kg)
Dual	Wide		
39086-X00	39221-X00	42	10 (4.5)
39086-X03	39221-X03	45	11 (5.0)
39086-X06	39221-X06	48	12 (5.4)
39086-X10	39221-X10	52	13 (5.9)

X=Color: C=Black, E=Glacier White. Shipping weights are for Wide brackets.

Part Number - Cabinet Width		Height (U)	Shipping Weight lb (kg)
6-Slide	4-Slide		
39124-X00	39131-X00	42	4 (1.8)
39124-X03	39131-X03	45	5 (2.3)
39124-X06	39131-X06	48	5 (2.3)
39124-X10	39131-X10	52	5 (2.3)

X=Color: C=Black, E=Glacier White.

Part Number	Description	Shipping Weight lb (kg)
39151-001	Label Holder Kit, Pack of 24, Black	1 (0.5)

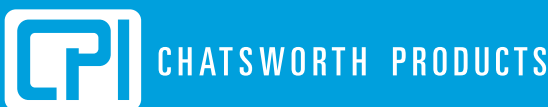
Part Number	Description	Shipping
12312-X01	Equipment Support Bracket, One Pair	2 (0.9)

X=Color: C=Black, E=Glacier White.



CPI now offers Extended Limited Warranties on CPI-Branded Electronic products, available for two additional years beyond the expiration of the Original Warranty Period (3 years).

Contact CPI Customer Service, or visit www.chatsworth.com/warranty for more information.



While every effort has been made to ensure the accuracy of all information, CPI does not accept liability for any errors or omissions and reserves the right to change information and descriptions of listed services and products. ©2017 Chatsworth Products, Inc. All rights reserved. Chatsworth Products, CPI, CPI Passive Cooling, eConnect, MegaFrame, Saf-T-Grip, Seismic Frame, SlimFrame, TeraFrame, GlobalFrame, CUBE-IT PLUS, Evolution, OnTrac, QuadraRack and Velocity are federally registered trademarks of Chatsworth Products. Simply Efficient, Secure Array and Click-Nut are trademarks of Chatsworth Products. All other trademarks belong to their respective companies. Rev.9 07/17 MKT-60020-576