

F-Series TeraFrame® Gen 3 Cabinet System

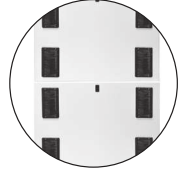
A distinctive, robust cabinet solution that supports and protects rack-mount servers, storage and network equipment in multi-tenant and enterprise data centers, computer rooms and network facilities.

PATENTED
VERTICAL EXHAUST DUCT



ADVANTAGES

- ➔ **New Sizes and Panels**
52U height, half-height side panel, and wider, brushed sealed cable openings
- ➔ **Enhanced Frame Design**
6-Slide frame with increased load-bearing capacity
- ➔ **Improved Slide Design**
Easier equipment rail adjustment and increased usable depth



KEY FEATURES

- Distinct and attractive styling sets the F-Series TeraFrame apart from other cabinets
- More sizes and a higher load capacity provide additional options to meet exact facility requirements
- Improved rail design and features, such as half height side panels and interchangeable doors and panels, make installation, maintenance access and adjustments for equipment quicker and easier
- Optional thermal management accessories isolate hot and cold air within the cabinet optimize front-to-rear or front-to-top airflow, and are fully compatible with Aisle Containment solutions
- Optional cable management accessories separate and organize power and network cables, and are fully compatible with CPI power management products and environmental monitoring systems

SPECIFICATIONS

	Welded steel and bolted aluminum four-post frame
	Equipment mounting rails, two pairs
	Equipment rail grommet kit
	Grounding/bonding system and ground lug
Includes	Leveling feet and casters
	Floor attachment brackets
	Baying kit, for 600 mm or 24" spacing
	PDU brackets, one pair, for mounting two vertical CPI PDUs
	Equipment mounting hardware, (50) M6 cage nuts and screws
Equipment space	See Height, Width and Depth tables under Ordering Information/Dimensions
Load Capacity, 6-Slide Frame (per UL2416)	3000 lb (1360 kg), static load on leveling feet
	2250 lb (1020 kg), rolling load on casters
Load Capacity, 4-Slide Frame (per UL2416)	2500 lb (1134 kg), static load on leveling feet
	2000 lb (907.2 kg), rolling load on casters
Certifications	EIA-310-E compliant
	UL Listed 2416, NWIN, File #E227626
Material	Steel frame, rails and panels
	Aluminum slides
	Plastic brushes, seals
Finish	Epoxy-polyester hybrid powder coat paint on frame, rails, panels in Black or Glacier White
	Brushes/seals, door handles/hinges are black
Environment	For indoor use only, in environmentally controlled areas, not harsh environments
Construction	Welded/bolted frame
	Mounting rails bolt to frame

Availability: Global

US & Canada

+1-800-834-4969
Toronto, Ontario, Canada
+905-850-7770
chatsworth.com
techsupport@chatsworth.com

Latin America

+52-55-5203-7525
Toll Free within Mexico
01-800-01-7592
chatsworth.com.co

Europe

+44-1628-524-834
chatsworth.com

Middle East & Africa

Dubai, UAE
+971-4-2602125
chatsworth.ae

Asia Pacific

+86 21 6880-0266
chatsworth.com.cn



CHATSWORTH
PRODUCTS

The F-Series TeraFrame® Gen 3 Cabinet System optimizes, stores and secures computer, data storage and network equipment in the data center, computer room or network environment.

F-Series TeraFrame is distinct, attractive and highly functional. The cabinet is available in a wide range of standard sizes and configurations to match your equipment and facility requirements. CPI's third generation F-Series TeraFrame features an enhanced frame design, new sizes and panels, easier equipment rail adjustment and smarter airflow management.

The third generation introduces a new 6-slide frame style that increases the cabinet's equipment load-bearing capacity. The frame is now available in a standard 52U height to maximize space. Side panels are half height so they are easier to handle, and the cable openings in the top and bottom panels are wider to accommodate large power distribution unit (PDU) power plugs. Equipment mounting rails are now Z-shaped with a solid front surface, use no standoff brackets, adjust quickly using less hardware and help block bypass airflow around equipment. There are grommet-sealed cable openings in the rails in wider cabinets that allow a dedicated front-to-rear pathway for cabling while blocking unwanted bypass airflow. Every cabinet also includes casters to ease placement, and leveling feet can be adjusted quickly using a ball hex driver.

Airflow management is an integral part of every cabinet. Brush seals cover all of the cable openings in the top and bottom panels. A new two-piece server top panel design provides an upgrade path to Vertical Exhaust Duct as thermal loads increase. When ordered with a duct, a bottom panel, airflow director and rear door seal are included with the cabinet to contain and channel hot exhaust air to the duct. The Vertical Exhaust Duct is also available in an additional height range for use with shorter ceilings and includes a brush-sealed cable entry port in the back for power cable entry. For best performance, use with the improved Air Dam and Snap-In Filler Panels (ordered separately) to form a complete seal around the sides and top of the cabinet and in between rack-mount equipment.

Combine the F-Series TeraFrame with thermal and cable management accessories to create a solution that fits your exact needs. See inside for product details. Contact CPI Technical Support for configuration assistance.

USE WITH

- Air Dam
- Bottom Panel
- Finger Cable Manager
- Ring Cable Manager
- Cable Lashing Bracket
- Full Height Dual PDU Bracket
- Klik-Nut Hardware Kit

RELATED PRODUCTS

- Snap-In Filler Panels
- Vertical PDUs and Power Strips
- Electronic Locking System
- Aisle Containment Solution

SPECIFICATIONS

	Order with cabinet or as service parts
	Perforated front door
	Choice of solid or perforated rear door
	Perforated area is 78% open
	Solid door includes a perimeter seal
Doors/Lock Kits	Front door opens to 120° when bayed, 130° when not bayed
	Rear door opens to 180° when bayed or not bayed
	Hinge pins allow easy removal during maintenance
	Reversible to open from the right or left, must move hinges/latch
	Interchangeable front or rear, must move hinges/latch
	Swing handle with choice of latch and lock
	Single- or two-point latch
	Keyed or Combination/Keyed lock
	Combination lock is programmed by user, has 1000 possible combinations
	Order with cabinet or as service parts
Side Panels	Solid, two-piece panels (half height, full depth)
	Individual top/bottom panels on 6-slide frame
	Stacking top/bottom panels on 4-slide frame
	Recessed spring-loaded latch with lock, keyed to match doors
	Bay cabinets with panels installed or removed
Panels with cable openings are available as accessories	
Order with cabinet or as a service part	
Top Panel	Network panel is a one-piece solid panel with four large 3.9"W x 8.8"D (99 mm x 224 mm) brush seals over cable openings, one per corner
	Unsealed cable openings are 4.5"W x 9.0"D (114 mm x 228 mm), wide enough to pass large PDU plugs
	Server panel is a two-piece version of the network panel, for use with cabinets 1050 mm D or deeper; remove the back piece to retrofit the cabinet with a Vertical Exhaust Duct
	Vertical Exhaust Duct is also for use with cabinets 1050 mm D or deeper, includes the duct and a front panel with two brush sealed cable openings, one per corner, can be adjusted in height and has a flexible top seal; select size to match the distance between the top of the cabinet and the overhead drop ceiling
Order with cabinet or as an accessory/service part	
Bottom Panel/Air Director	Only included with cabinets that have a Vertical Exhaust Duct top panel
	Bottom panel is a two-piece solid panel with two large 3.9"W x 8.8"D (99 mm x 224 mm) brush seals over cable openings in back corners
	Unsealed cable openings are 4.5"W x 9.0"D (114 mm x 228 mm), wide enough to pass large PDU plugs
Air director is a curved plane mounted near the back of the cabinet that guides airflow upwards toward the Vertical Exhaust Duct	
Two pairs of mounting rails in the cabinet	
Equipment Support	Adjustable depth, rails slide front-to-back, marks on frame for easy vertical alignment
	1-3/4"H (44.45 mm) U spacing, marked and numbered on all rails
	19"W, EIA-310-E Universal 5/8"-5/8"-1/2" (15.9 mm – 15.9 mm – 12.7 mm) vertical hole spacing
	Square-punched mounting holes accept Klik-Nut Hardware Kits and standard cage nuts
	Includes 50 each M6 cage nuts and screws with square-punched rails
Mounting rails, top panel, side panels and doors are electrically bonded to the cabinet frame	
Grounding/Bonding	Prepared location for ground lug at the top and bottom of the cabinet frame
	A grounding lug is included to attach the frame to ground
PDU Brackets	One pair of brackets and installation hardware
	Use with CPI Vertical Power Strips or PDUs
	Supports two 2.2"W (51 mm) or narrower PDUs side-by-side or one PDU up to 3.5"W (89 mm)
	Attaches to the frame in either back corner
	Provides tool-less attachment points spaced 61.25" (1556 mm) apart on all cabinets
Provides alternate tool-less attachment points spaced 64.75" (1645 mm) on cabinets 44U or taller	
Full height bracket with cable tie points is also available as an accessory	

ORDERING INFORMATION

Use the part number configurator below to create a custom F-Series TeraFrame. Choose the **Height, Width, Depth, Rail Style, Front Door, Rear Door, Latch, Color, Top Panel Style, Side Panel Style** and **Frame Style**. *Example part number: FC1U-113B-C42-B*

Complete Matrix:

The complete product matrix includes all options available. The Industry Standard Models that offer affordable pricing and shorter lead times are highlighted.

1. Height		2. Width		3. Depth				4. Rail Style		5. Front Door		6. Rear Door		7. Latch/Locks Kits		8. Color		9. Top Panel Style		10. Side Panel Style		11. Frame Style							
U	in	mm	in	mm	in	mm	in	mm																					
42	79.4	2016	31.5	800	35.4	900	31.5	800	Square-Punched, 2-Pair	None	0	None	0	Black	0	None	0	None	0	None	A	4-Slide	C	42					
43	81.1	2060	32.5	825	36.4	925	32.5	825		Single, Perforated	1	Single, Solid Metal	1	Two-Point, Keyed Lock	C	Black	2	Network, One-Piece, 4 Cable Openings	1	Solid, 1 each	A	4-Slide	C	43					
44	82.9	2105	33.5	850	37.4	950	33.5	850				Double, Perforated Metal	3	Single-Point, Keyed/Combination Lock	E	Glacier White	4	Server, Two-Piece, 4 Cable Openings	2	Solid, 2 each	B	6-Slide	C	44					
45	84.6	2149	34.4	875	38.4	975	34.4	875						Two-Point, Keyed/Combination Lock			5	Vertical Exhaust Duct, 20"-34"H (508-863 mm)					C	45					
46	86.4	2193	35.4	900	39.4	1000	35.4	900						None			6	Vertical Exhaust Duct, 34"-60"H (863-1523 mm)						C	46				
47	88.1	2238	36.4	925	40.4	1025	36.4	925									7	Vertical Exhaust Duct, 14"-20"H (356-508 mm)							C	47			
48	89.9	2282	37.4	950	41.4	1050	37.4	950																			C	48	
49	91.6	2327	38.4	975	42.3	1075	38.4	975																				C	49
50	93.4	2371	39.4	1000	43.3	1100	39.4	1000																				C	50
51	95.1	2416	40.4	1025	44.3	1125	40.4	1025																				C	51
52	96.9	2460	41.3	1050	45.3	1150	41.3	1050																				C	52
			42.3	1075	46.3	1175	42.3	1075																				C	
			43.3	1100	47.3	1200	43.3	1100																				C	
			44.3	1125	48.2	1225	44.3	1125																				C	
			45.3	1150	49.2	1250	45.3	1150																				C	
			46.3	1175	50.2	1275	46.3	1175																				C	
			47.2	1200	51.2	1300	47.2	1200																				C	

Height includes casters.

Frame Depth does not include doors. Front door adds 2.4" (61 mm) Rear door adds 1.5" (38 mm). See Dimensional Drawing

Options 4, 5, 6, & 7 are for cabinets that are 41.3"D (1050 mm) or deeper. Use solid rear door with Vertical Exhaust Duct. Vertical Exhaust Duct includes Bottom Panel and Air Director.

Notes:

- Use the perforated doors with Aisle Containment Solutions or traditional hot aisle/cold aisle applications. Use the solid rear door with Vertical Exhaust Duct top panels.
- Select a single-point or two-point latch and a keyed or combination lock. Double doors require a two-point latch. If you select a single-point latch and a double rear door, the front door will have a single-point latch, and the rear door will have a two-point latch.
- There are three styles of top panel. Network top panels are a one-piece panel with four brush sealed cable openings, one per corner. Server top panels are for cabinets that are 1050 mm D or deeper that may be upgraded with Vertical Exhaust Duct at a future date. Server top panels are two-piece panels with four brush sealed cable openings, one per corner. The rear piece of the panel is removed to add a Vertical Exhaust Duct. Vertical Exhaust Duct top panels have two brush sealed cable openings in the front corners and the duct at the rear of the cabinet. Choose the duct height range that fits the distance between the top of the cabinet and the drop ceiling. Cabinets with Vertical Exhaust Duct top panels include a bottom panel and airflow director and must be used with a solid rear door.

DIMENSION TABLES

Height Dimensions - in (mm)			
Rack Mount Spaces (U)	Overall with Casters	Frame Only No Casters	Front Opening
42	79.4 (2016)	77.4 (1965)	73.9 (1876)
43	81.1 (2060)	79.1 (2010)	75.6 (1921)
44	82.9 (2105)	80.9 (2054)	77.4 (1965)
45	84.6 (2149)	82.6 (2099)	79.1 (2010)
46	86.4 (2193)	84.4 (2143)	80.9 (2054)
47	88.1 (2238)	86.1 (2187)	82.6 (2099)
48	89.9 (2282)	87.9 (2232)	84.4 (2143)
49	91.6 (2327)	89.6 (2276)	86.1 (2187)
50	93.4 (2371)	91.4 (2321)	87.9 (2232)
51	95.1 (2416)	93.1 (2365)	89.6 (2276)
52	96.9 (2460)	94.9 (2410)	91.4 (2321)

Casters add approximately 2" (51 mm) to frame and are factory installed on the cabinet.

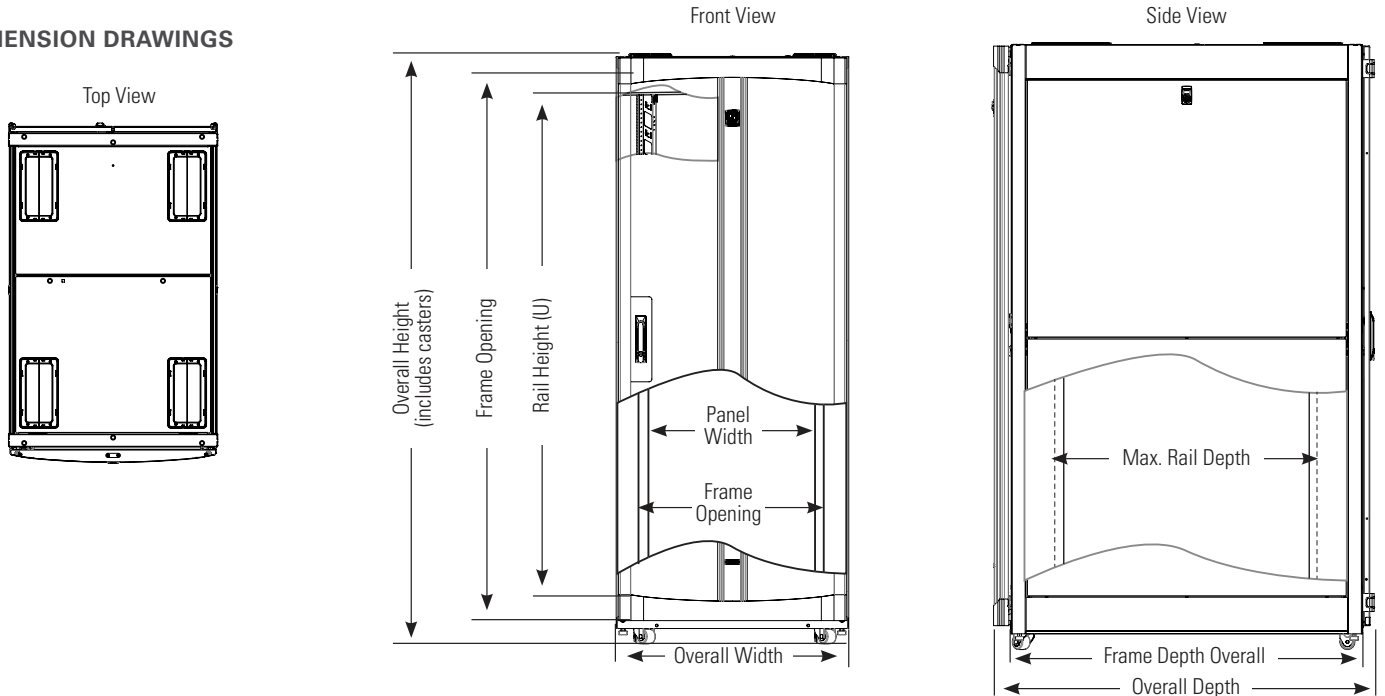
Width Dimensions - in (mm)			
Nominal Width	Overall with Side Panels	Front Opening	Rack-Mount Panel Width
600	23.6 (600)	19.6 (498)	19 (482.6)
700	27.6 (700)	23.5 (598)	19 (482.6)
800	31.5 (800)	27.5 (698)	19 (482.6)

Mounting Rail clearance is 17.8" (452 mm), mounting hole spacing is 18.3" (465 mm).

Depth Dimensions - in (mm)			
Nominal Depth	Overall with Doors	Frame Only No Doors	Maximum Rail Depth
800	35.4 (900)	31.5 (800)	29.3 (745)
825	36.4 (925)	32.5 (825)	30.3 (770)
850	37.4 (950)	33.5 (850)	31.3 (795)
875	38.4 (975)	34.4 (875)	32.3 (820)
900	39.4 (1000)	35.4 (900)	33.2 (843)
925	40.4 (1025)	36.4 (925)	34.2 (870)
950	41.4 (1050)	37.4 (950)	35.2 (895)
975	42.3 (1075)	38.4 (975)	36.2 (920)
1000	43.3 (1100)	39.4 (1000)	37.2 (945)
1025	44.3 (1125)	40.4 (1025)	38.2 (970)
1050	45.3 (1150)	41.3 (1050)	39.2 (995)
1075	46.3 (1175)	42.3 (1075)	40.1 (1020)
1100	47.3 (1200)	43.3 (1100)	41.1 (1045)
1125	48.2 (1225)	44.3 (1125)	42.1 (1070)
1150	49.2 (1250)	45.3 (1150)	43.1 (1095)
1175	50.2 (1275)	46.3 (1175)	44.1 (1120)
1200	51.2 (1300)	47.2 (1200)	45.1 (1145)

Front Door is approximately 2.4"D (61 mm) and Rear Door is approximately 1.5"D (38 mm) with hinges/latches. Minimum rail depth is 7" (178 mm), each rail is 3.5"D (89 mm). Rail depth is reduced when vertical accessories are placed in corners.

DIMENSION DRAWINGS



Installation Products

Installation products include equipment mounting hardware, concrete floor anchors and raised floor grommets. Be sure to secure your cabinets to the floor and to seal openings in panels and the raised floor.

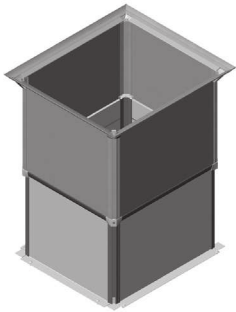
Part Number	Description	Shipping Weight lb (kg)
39150-001	Leveling Feet Height Adjustment Tool, 5 mm Hex Ball Driver, 12"L (300 mm)	1 (0.5)
76543-001*	Clik-Nut Hardware Kit, Cage Nuts, Screws, M6, 25 Pack, Zinc	1 (0.5)
12637-001	Mounting Hardware Kit, Cage Nuts, Screws, M6, 25 Pack, Gold	1 (0.5)
12638-001	Mounting Hardware Kit, Cage Nuts, Screws, #10-32, 25 Pack, Zinc	1 (0.5)
12639-001	Mounting Hardware Kit, Cage Nuts, Screws, #12-24, 25 Pack, Black	1 (0.5)
40604-003	Concrete Floor Installation Kit, (4) 1/2" threaded components, Zinc	4 (1.8)

* Additional thread size and quantities available.



THERMAL MANAGEMENT ACCESSORIES

To optimize cooling performance in your facility, you must isolate hot and cold air, guide cold air to equipment and remove hot air from equipment. Thermal management accessories play a critical role in overall performance by controlling airflow inside the cabinet.



PATENTED
VERTICAL EXHAUST DUCT

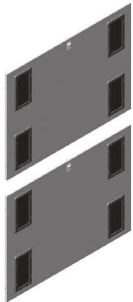
Vertical Exhaust Duct

Vertical Exhaust Duct attaches to the top of the cabinet to provide a sealed pathway for hot air from the top of the cabinet to an overhead drop ceiling as part of a closed hot air return.

- Upgrades installed cabinet in traditional hot aisle/cold aisle environment from front-to-rear airflow to front-to-top airflow
- Used with Solid Rear Door, Bottom Panel, Air Dam, Snap-In Filler Panels and Air Director to completely contain hot exhaust air, and remove it from the cabinet and room
- Fits cabinets that are 41.3”D (1050 mm) or deeper that have a two-piece Server top panel
- Two-piece duct adjusts in height to span the distance between the top of the cabinet and the overhead drop ceiling, available in three sizes (see description in order table)
- Features easy height adjustment, flexible seal at the top to accommodate variations in the drop ceiling
- Includes a brush sealed cable opening on the back of the duct to allow power cords to enter the back of the cabinet when the duct is installed
- U.S. patents apply to this product. For details visit www.chatsworth.com/patents
- Includes: Vertical Exhaust Duct and installation hardware
- Material: Steel duct panels; top seal and duct corners are plastic
- Finish: Black or Glacier White; seal and corners are black
- Select part number to match the width and color of the cabinet

Part Number - Cabinet Width			Description in (mm)	Shipping Weight lb (kg)
23.6”W (600 mm)	27.6”W (700 mm)	31.5”W (800 mm)		
39177-X00	39177-X03	39177-X06	14-20 (356-508)	17 (7.7)
39177-X01	39177-X04	39177-X07	20-34 (508-863)	25 (11.3)
39177-X02	39177-X05	39177-X08	34-60 (863-1523)	43 (19.5)

X=Color; 7=Black, E=Glacier White. Shipping Weights are 800 mm ducts.



Side Panel with Brush Sealed Cable Openings

Side Panel With Brush Sealed Cable Openings feature multiple brush sealed cable openings that allow cables to enter the side of the cabinet while containing exhaust air within each cabinet.

- Two-piece design with top and bottom halves for easier handling
- Eight cable openings per side, four per half-height panel, one per corner, are 4.5”W x 9”D (114 mm x 228 mm) without cover, sized for large power plugs
- Brush cover over cable openings protects cables as they pass through the side panel and provides a 3.9”W x 8.8”D (99 mm x 223 mm) pass through area for cables
- Tool-less removal, drop in design with integrated locking spring latch secures the side panel to the cabinet frame
- Integrated grounding tabs to electrically bond the side panel to cabinet frame
- Includes: Side panel (two halves, with brushes), installation hardware, set of keys
- Material: Steel panels; brushes are plastic, Finish: Black or Glacier White; brushes are black
- Select part number to match the frame style, height, depth and color of the cabinet

Bay Seal Kit

Bay Seal Kit is only used with 23.6”W (600 mm) cabinets when the cabinets are bayed to align with 24”W (610 mm) floor tiles. The bay seal kit fills the small gaps left between cabinets.

- Flexible plastic insert that blocks airflow between cabinets
- Includes: side baffles, cut to length
- Material: Plastic
- Finish: Black only
- Select part number to match the usable height of the cabinet

Frame Style	Part Number												Cabinet Frame in (mm)	Shipping Weight lb (kg)
	6-Slide	4-Slide	Height (U)											
		42	43	44	45	46	47	48	49	50	51	52		
39047	39043	-X00	-X17	-X34	-X51	-X68	-X85	-XAC	-XAY	-XBU	-XCP	-XDL	31.5 (800)	44 (20.0)
		-X01	-X18	-X35	-X52	-X69	-X86	-XAD	-XBA	-XBV	-XCR	-XDM	32.5 (825)	46 (20.9)
		-X02	-X19	-X36	-X53	-X70	-X87	-XAE	-XBB	-XBW	-XCT	-XDN	33.5 (850)	47 (21.3)
		-X03	-X20	-X37	-X54	-X71	-X88	-XAF	-XBC	-XBY	-XCU	-XDP	34.4 (875)	49 (22.2)
		-X04	-X21	-X38	-X55	-X72	-X89	-XAG	-XBD	-XCA	-XCV	-XDR	35.4 (900)	50 (22.7)
		-X05	-X22	-X39	-X56	-X73	-X90	-XAH	-XBE	-XCB	-XCW	-XDT	36.4 (925)	52 (23.6)
		-X06	-X23	-X40	-X57	-X74	-X91	-XAJ	-XBF	-XCC	-XCY	-XDU	37.4 (950)	53 (24.0)
		-X07	-X24	-X41	-X58	-X75	-X92	-XAK	-XBG	-XCD	-XDA	-XDV	38.4 (975)	55 (24.9)
		-X08	-X25	-X42	-X59	-X76	-X93	-XAL	-XBH	-XCE	-XDB	-XDW	39.4 (1000)	56 (25.4)
		-X09	-X26	-X43	-X60	-X77	-X94	-XAM	-XBJ	-XCF	-XDC	-XDY	40.4 (1025)	58 (26.3)
		-X10	-X27	-X44	-X61	-X78	-X95	-XAN	-XBK	-XCG	-XDD	-XEA	41.3 (1050)	59 (26.8)
		-X11	-X28	-X45	-X62	-X79	-X96	-XAP	-XBL	-XCH	-XDE	-XEB	42.3 (1075)	61 (27.7)
		-X12	-X29	-X46	-X63	-X80	-X97	-XAR	-XBM	-XCJ	-XDF	-XEC	43.3 (1100)	62 (28.1)
		-X13	-X30	-X47	-X64	-X81	-X98	-XAT	-XBN	-XCK	-XDG	-XED	44.3 (1125)	64 (29.0)
		-X14	-X31	-X48	-X65	-X82	-X99	-XAU	-XBP	-XCL	-XDH	-XEE	45.3 (1150)	65 (29.5)
		-X15	-X32	-X49	-X66	-X83	-XAA	-XAV	-XBR	-XCM	-XDJ	-XEF	46.3 (1175)	67 (30.4)
-X16	-X33	-X50	-X67	-X84	-XAB	-XAW	-XBT	-XCN	-XDK	-XEG	47.2 (1200)	68 (30.8)		

X=Color; C=Black, E=Glacier White. Shipping Weights are for 4-Slide, 52U panels. 6-Slide panels are approximately 8 lb (3.6 kg) lighter.

Part Number	Height (U)	Shipping Weight lb (kg)
39137-700	42	5 (2.3)
39137-701	43	5 (2.3)
39137-702	44	5 (2.3)
39137-703	45	5 (2.3)
39137-704	46	5 (2.3)
39137-705	47	5 (2.3)
39137-706	48	5 (2.3)
39137-707	49	5 (2.3)
39137-708	50	5 (2.3)
39137-709	51	5 (2.3)
39137-710	52	5 (2.3)

THERMAL MANAGEMENT ACCESSORIES (CONTINUED)



Air Dam

Air Dam blocks airflow around the sides and top of the equipment mounting space, so cold air passes through equipment and hot air does not recirculate around equipment.

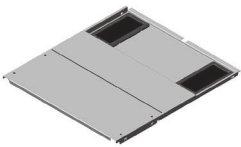
- 600 mm attaches by wrapping around flange, 700 mm & 800 mm attaches by snapping onto half lance
- Requires a minimum rail setback of 1.3" (33 mm) from the front of the cabinet frame; maximum rail setback is 9.8" (248 mm) without Bottom Panel
- Flexible seal against top and side panels
- Includes: top, bottom and side baffles, installation hardware
- Material: Steel, sheet metal
- Finish: Black or Glacier White; seals are black
- Select part number to match the frame style, width, usable height and color of the cabinet

Part Number - Cabinet Width For 6-Slide Frame Style			Height (U)	Shipping Weight lb (kg)
23.6"W (600 mm)	27.6"W (700 mm)	31.5"W (800 mm)		
39085-X00	39085-X11	39085-X22	42	11 (5.0)
39085-X01	39085-X12	39085-X23	43	11 (5.0)
39085-X02	39085-X13	39085-X24	44	11 (5.0)
39085-X03	39085-X14	39085-X25	45	11 (5.0)
39085-X04	39085-X15	39085-X26	46	12 (5.4)
39085-X05	39085-X16	39085-X27	47	12 (5.4)
39085-X06	39085-X17	39085-X28	48	12 (5.4)
39085-X07	39085-X18	39085-X29	49	12 (5.4)
39085-X08	39085-X19	39085-X30	50	12 (5.4)
39085-X09	39085-X20	39085-X31	51	12 (5.4)
39085-X10	39085-X21	39085-X32	52	13 (5.9)

X=Color; C=Black, E=Glacier White. Shipping Weights are 800 mm kits.

Part Number - Cabinet Width For 4-Slide Frame Style			Height (U)	Shipping Weight lb (kg)
23.6"W (600 mm)	27.6"W (700 mm)	31.5"W (800 mm)		
39130-X00	39130-X11	39130-X22	42	11 (5.0)
39130-X01	39130-X12	39130-X23	43	11 (5.0)
39130-X02	39130-X13	39130-X24	44	11 (5.0)
39130-X03	39130-X14	39130-X25	45	12 (5.4)
39130-X04	39130-X15	39130-X26	46	12 (5.4)
39130-X05	39130-X16	39130-X27	47	12 (5.4)
39130-X06	39130-X17	39130-X28	48	12 (5.4)
39130-X07	39130-X18	39130-X29	49	12 (5.4)
39130-X08	39130-X19	39130-X30	50	13 (5.9)
39130-X09	39130-X20	39130-X31	51	13 (5.9)
39130-X10	39130-X21	39130-X32	52	13 (5.9)

X=Color; C=Black, E=Glacier White. Shipping Weights are 800 mm kits.



Bottom Panel

Bottom Panel seals the bottom of the cabinet to contain and control airflow in cabinets that are elevated on casters or leveling feet.

- Solid panel with two brush sealed cable openings
- Two-piece design for easy installation, adjusts in depth to fit cabinet
- Two cable openings, in back corners, are 4.5"W x 9"D (114 mm x 228 mm) without cover, sized for large power plugs
- Brush covers over cable openings, protects cables as they pass through bottom panel, provides a 3.9"W x 8.8"D (99 mm x 223 mm) pass through area for cables
- Brush cover is two halves that snap together around cables and forms a seal
- Used in combination with Air Dam and Vertical Exhaust Duct
- Includes: Bottom panel with brush covers, installation brackets and hardware
- Material: Steel bottom panel; brushes are plastic
- Finish: Black or Glacier White; brushes are black
- Select part number to match the width and color of the cabinet
- Fits cabinet frames that are 39.4"D (1000 mm) and deeper

Part Number - Cabinet Width			Depth in (mm)	Shipping Weight lb (kg)
23.6"W (600 mm)	27.6"W (700 mm)	31.5"W (800 mm)		
39132-X00	39132-X01	39132-X02	≥39.4 (1000)	30 (13.6)

X=Color; C=Black, E=Glacier White. Shipping Weights are 800 mm kits.

ADDITIONAL ACCESSORIES

Additional Accessories - Thermal Management		
Part Number	Description	Shipping Weight lb (kg)
34537-X00	Snap-In Filler Panel, 1U x 19"W (482.6 mm), Single	14 (6.4)*
34537-X01	Snap-In Filler Panel, 1U x 19"W (482.6 mm), 6 Pack	14 (6.4)*
34537-X02	Snap-In Filler Panel, 1U x 19"W (482.6 mm), 50 Pack	14 (6.4)
34538-X00	Snap-In Filler Panel, 2U x 19"W (482.6 mm), Single	21 (9.5)*
34538-X01	Snap-In Filler Panel, 2U x 19"W (482.6 mm), 6 Pack	21 (9.5)*
34538-X02	Snap-In Filler Panel, 2U x 19"W (482.6 mm), 50 Pack	21 (9.5)
Raised Floor Grommet		
13671-001	Raised Floor Grommet, Each, with Hardware, Black	2 (1.4)
13671-002	Raised Floor Grommet, with Hardware, 10 Pack, Black	18 (8.2)

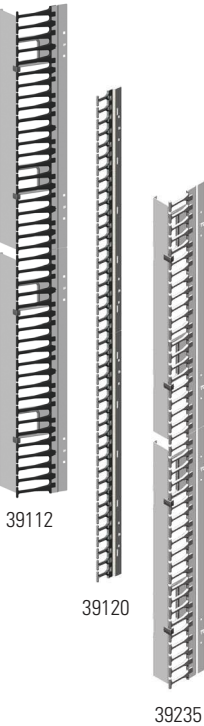
X=Color; O=Black, E=Glacier White. *Shipping Weights are for 50 pack.

Additional Accessories - Electronic Locking Systems				
Part Number - By Door Style			Description	Shipping Weight lb (kg)
Front Door Single, Perf.	Rear Door Single, Perf.	Rear Door Double, Perf.		
Electronic Lock Kit, System 1000				
39222-C00	39223-C00	N/A	For Single-Point Latch	3 (1.4)
39226-C99	39227-C99	39225-C99	For Two-Point Latch	3 (1.4)
Electronic Lock Kit, System 1500				
39222-C01	39223-C01	N/A	For Single-Point Latch	3 (1.4)
39229-C99	39230-C99	39228-C99	For Two-Point Latch	3 (1.4)

Note: These part numbers are retrofit electronic lock kits that replace the swing handle on the cabinet door. To order this lock kit pre-installed on the cabinet door, use the CPI Product Configurator on the CPI website.

CABLE MANAGEMENT ACCESSORIES

Organizing and separating network and power cables simplifies maintenance activities, making it easier to trace cables during troubleshooting, moves, adds and changes. Cable management accessories provide an assortment of options to organize cables by rack-mount space (U), in easy to access bundles using cable rings or more permanent bundles using lashing bars.



Finger Cable Manager

Finger Cable Manager attaches to the equipment mounting rail creating a pathway for cables next to the rail, and includes plastic T-shaped cable guides (fingers) that organize cables by rack-mount space (U). Two depths are available.

- Attaches to and adjusts with mounting rails, fully compatible with Air Dam
- Plastic, T-shaped cable guides (fingers) organize cables by rack-mount space (U)
- Openings between cable guides (fingers) align with each rack-mount space on the mounting rail
- Pass up to 48 cables per U space through openings on Finger Cable Manager
- Pass up to 24 cables per U space through openings on Finger Cable Manager, Short
- Hinged cover included with managers in wider cabinets; cover snaps closed to secure cables
- Includes: finger cable manager, cover (P/N 39112-XXX and 39235-XXX only), installation hardware
- Material: Steel panels, plastic guides and latches
- Finish: Black or Glacier White; guides and latches are black
- Select part number to match the frame style, width, usable height and color of the cabinet

Inside Dimensions, Usable Internal Cable Area, Rails Setback, U Opening					
Cabinet Width	Width in (mm)	Depth in (mm)	Cable Area in ² (mm ²)	Rail Setback in (mm)	U Opening in ² (mm ²)
Finger Cable Manager					
27.6 (700)	2.6 (66)	8.4 (213)	21.8 (14 060)	10.1 (257)	6.6 (4260)
31.5 (800)	4.6 (117)	8.4 (213)	38.6 (24 900)	10.1 (257)	6.6 (4260)
Finger Cable Manager, Short					
23.6 (600)	0.5 (13)	6.0 (150)	3 (1900)	7.6 (193)	3.5 (2260)
27.6 (700)	2.6 (66)	6.0 (150)	15.6 (10 060)	7.6 (193)	3.5 (2260)
31.5 (800)	4.6 (117)	6.0 (150)	27.8 (17 940)	7.6 (193)	3.5 (2260)

Rail setback is the minimum distance required between the front edge of the cabinet frame and the front edge of the equipment mounting rail. U opening is the size of the side opening at each U space between T-shaped cable guides (fingers).

Part Number - Cabinet Width			Height (U)	Shipping Weight lb (kg)
23.6"W (600 mm)	27.6"W (700 mm)	31.5"W (800 mm)		
Finger Cable Manager				
N/A	39112-X11	39112-X22	42	22 (10.0)
N/A	39112-X12	39112-X23	43	22 (10.0)
N/A	39112-X13	39112-X24	44	22 (10.0)
N/A	39112-X14	39112-X25	45	23 (10.4)
N/A	39112-X15	39112-X26	46	23 (10.4)
N/A	39112-X16	39112-X27	47	23 (10.4)
N/A	39112-X17	39112-X28	48	25 (11.3)
N/A	39112-X18	39112-X29	49	25 (11.3)
N/A	39112-X19	39112-X30	50	25 (11.3)
N/A	39112-X20	39112-X31	51	26 (11.8)
N/A	39112-X21	39112-X32	52	26 (11.8)
Finger Cable Manager, Short				
39120-X00	39235-X11	39235-X22	42	21 (9.5)
39120-X01	39235-X12	39235-X23	43	21 (9.5)
39120-X02	39235-X13	39235-X24	44	21 (9.5)
39120-X03	39235-X14	39235-X25	45	22 (10.0)
39120-X04	39235-X15	39235-X26	46	22 (10.0)
39120-X05	39235-X16	39235-X27	47	22 (10.0)
39120-X06	39235-X17	39235-X28	48	23 (10.4)
39120-X07	39235-X18	39235-X29	49	23 (10.4)
39120-X08	39235-X19	39235-X30	50	23 (10.4)
39120-X09	39235-X20	39235-X31	51	24 (10.9)
39120-X10	39235-X21	39235-X32	52	24 (10.9)

X=Color: C=Black, E=Glacier White. Shipping Weights are for 800 mm kits.



Ring Cable Manager

Ring Cable Manager is independent of the equipment mounting rails creating a separate vertical pathway for cables and includes plastic cable rings to organize cables.

- Attaches to the frame, adjusts in depth independent of the mounting rails
- Rings have an opening on the front for easy addition or removal of cables
- Includes: brackets, rings, installation hardware
- Material: Steel brackets, plastic rings
- Finish: Black or Glacier White; rings are black
- Select part number to match the frame style, width, usable height and color of the cabinet

Part Number - Cabinet Width For 6-Slide Frame Style			Height (U)	Shipping Weight lb (kg)
23.6"W (600 mm)	27.6"W (700 mm)	31.5"W (800 mm)		
39087-X00	39088-X00	39089-X00	42	13 (5.9)
39087-X01	39088-X01	39089-X01	43	13 (5.9)
39087-X02	39088-X02	39089-X02	44	13 (5.9)
39087-X03	39088-X03	39089-X03	45	14 (6.4)
39087-X04	39088-X04	39089-X04	46	14 (6.4)
39087-X05	39088-X05	39089-X05	47	14 (6.4)
39087-X06	39088-X06	39089-X06	48	14 (6.4)
39087-X07	39088-X07	39089-X07	49	14 (6.4)
39087-X08	39088-X08	39089-X08	50	15 (6.8)
39087-X09	39088-X09	39089-X09	51	15 (6.8)
39087-X10	39088-X10	39089-X10	52	15 (6.8)

X=Color: C=Black, E=Glacier White. Shipping Weights are 800 mm kits.

Inside Dimensions, Usable Internal Cable Area, Rail Setback					
Cabinet Width	Width in (mm)	Depth in (mm)	Cable Area in ² (mm ²)	Rail Setback in (mm) 6-Slide	Rail Setback in (mm) 4-Slide
23.6 (600)	.9 (29)	3.3 (84)	2.9 (1870)	7.6 (193)	9.1 (231)
27.6 (700)	2.3 (58)	5.5 (140)	12.6 (8130)	8.2 (208)	8.2 (208)
31.5 (800)	4.2 (107)	3.5 (89)	14.7 (9480)	6.4 (163)	6.4 (163)

Part Number - Cabinet Width For 4-Slide Frame Style			Height (U)	Shipping Weight lb (kg)
23.6"W (600 mm)	27.6"W (700 mm)	31.5"W (800 mm)		
39127-X00	39128-X00	39129-X00	42	14 (6.4)
39127-X01	39128-X01	39129-X01	43	14 (6.4)
39127-X02	39128-X02	39129-X02	44	14 (6.4)
39127-X03	39128-X03	39129-X03	45	14 (6.4)
39127-X04	39128-X04	39129-X04	46	14 (6.4)
39127-X05	39128-X05	39129-X05	47	15 (6.8)
39127-X06	39128-X06	39129-X06	48	15 (6.8)
39127-X07	39128-X07	39129-X07	49	15 (6.8)
39127-X08	39128-X08	39129-X08	50	15 (6.8)
39127-X09	39128-X09	39129-X09	51	15 (6.8)
39127-X10	39128-X10	39129-X10	52	15 (6.8)

X=Color: C=Black, E=Glacier White. Shipping Weights are 800 mm kits.

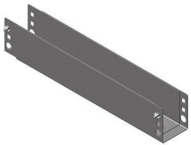
CABLE MANAGEMENT ACCESSORIES (CONTINUED)



Full Height Dual PDU Bracket

Full Height Dual PDU Bracket supports two vertical PDUs side-by-side and has multiple slots for CPI Saf-T-Grip® Straps or tie wraps to secure cords to the bracket.

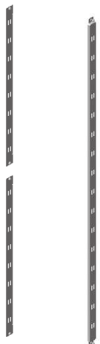
- Attaches to the frame, adjusts in depth independent of the mounting rails
- Available in two widths; Dual and Wide
- Dual bracket is 4.8"W (121 mm) and supports two PDUs up to 2.2"W (51 mm) side-by-side
- Dual bracket supports most CPI eConnect PDUs and power strips side-by-side
- Wide bracket is 5.8"W (147 mm) and supports two PDUs up to 2.7"W (69 mm) side-by-side
- Wide bracket is required to mount two 6-bracker eConnect PDUs (series P/N PX-3XXXX) side-by-side
- Tool-less mounting on 28" (711 mm), 61.25" (1556 mm) or 64.75" (1645 mm) centers
- Includes: brackets, installation hardware, order Saf-T-Grips or cable ties separately
- Material: Steel; Finish: Black or Glacier White
- Select part number to match the usable height and color of the cabinet



Front-to-Rear Cable Manager

Front-to-Rear Cable Manager attaches to the back of equipment mounting rails creating a front-to-rear pathway between the front and rear mounting rails for cables.

- For use on 27.6"W (700 mm) and 31.5"W (800 mm) cabinets
- Mounting locations behind cable openings on each rail
- Attaches to mounting rails and extends to match depth
- Creates a 2.5"W (64 mm) x 3"D (78 mm) front-to-rear pathway for cables
- Includes: cable manager, installation hardware
- Material: Steel panels, Finish: Black or Glacier White
- Select part number to match the color of the cabinet



Cable Lashing Bracket

Cable Lashing Bracket creates a simple, separate vertical pathway for a small bundle of cables and has multiple slots for CPI Saf-T-Grip® Straps or tie wraps to secure cables to the bracket.

- Attaches to the frame, adjusts in depth independent of the mounting rails
- Bracket is 1.6"W (41 mm)
- Includes: brackets, installation hardware, order Saf-T-Grips or cable ties separately
- Material: Steel; Finish: Black or Glacier White
- Select part number to match the frame style, usable height and color of the cabinet



Equipment Support Bracket

mounts to the rear rails to of the N Series TeraFrame to provide additional support and safety for deep or heavy electronic equipment panels mounted on CPI racks or cabinets.

- Supports equipment weighing up to 60 lbs (27.2 kg)
- Made of Strong, lightweight aluminum
- Overall depth is 13" (330 mm); chassis support lip is 1.5" W (38 mm)
- Fits all EIA Standard, hole-patterned equipment mounting rails, cabinets and four-post racks
- Eliminates equipment sag caused by cantilevered mounting

Service Parts

Service parts include mounting rails, top panels, side panels, doors and door lock kits and are used as replacement parts or to upgrade cabinets as applications change. The F-Series TeraFrame Service Parts Cut Sheet is available for download at www.chatsworth.com/F-Series or contact CPI Technical Support at 800-834-4969 or techsupport@chatsworth.com for assistance.

For product CSI Specs, visit the Support & Downloads page on www.chatsworth.com.

Part Number		Height (U)	Shipping Weight lb (kg)
Dual	Wide		
39086-X00	39221-X00	42	10 (4.5)
39086-X01	39221-X01	43	10 (4.5)
39086-X02	39221-X02	44	11 (5.0)
39086-X03	39221-X03	45	11 (5.0)
39086-X04	39221-X04	46	11 (5.0)
39086-X05	39221-X05	47	12 (5.4)
39086-X06	39221-X06	48	12 (5.4)
39086-X07	39221-X07	49	12 (5.4)
39086-X08	39221-X08	50	12 (5.4)
39086-X09	39221-X09	51	12 (5.4)
39086-X10	39221-X10	52	13 (5.9)

X=Color: C=Black, E=Glacier White. Shipping weights are for Wide brackets.

Part Number - Cabinet Width			Rail Depth Range in (mm)	Shipping Weight lb (kg)
23.6"W (600 mm)	27.6"W (700 mm)	31.5"W (800 mm)		
N/A	39077-X00	39077-X00	22-34 (558-863)	5 (2.3)

X=Color: C=Black, E=Glacier White.

Part Number - Frame Style		Height (U)	Shipping Weight lb (kg)
6-Slide	4-Slide		
39124-X00	39131-X00	42	4 (1.8)
39124-X01	39131-X01	43	4 (1.8)
39124-X02	39131-X02	44	4 (1.8)
39124-X03	39131-X03	45	5 (2.3)
39124-X04	39131-X04	46	5 (2.3)
39124-X05	39131-X05	47	5 (2.3)
39124-X06	39131-X06	48	5 (2.3)
39124-X07	39131-X07	49	5 (2.3)
39124-X08	39131-X08	50	5 (2.3)
39124-X09	39131-X09	51	5 (2.3)
39124-X10	39131-X10	52	5 (2.3)

X=Color: C=Black, E=Glacier White.

Part Number	Description	Shipping
12312-X01	Equipment Support Bracket, One Pair	2 (0.9)

X=Color: C=Black, E=Glacier White.



CPI now offers Extended Limited Warranties on CPI-Branded Electronic products, available for two additional years beyond the expiration of the Original Warranty Period (3 years).

Contact CPI Customer Service, or visit www.chatsworth.com/warranty for more information.



While every effort has been made to ensure the accuracy of all information, CPI does not accept liability for any errors or omissions and reserves the right to change information and descriptions of listed services and products. ©2016 Chatsworth Products, Inc. All rights reserved. Chatsworth Products, CPI, CPI Passive Cooling, eConnect, MegaFrame, Saf-T-Grip, Seismic Frame, SlimFrame, TeraFrame, GlobalFrame, CUBE-IT PLUS, Evolution, OnTrac, QuadraRack and Velocity are federally registered trademarks of Chatsworth Products. Simply Efficient, Secure Array and Klik-Nut are trademarks of Chatsworth Products. All other trademarks belong to their respective companies. Rev.8 07/17 MKT-60020-575