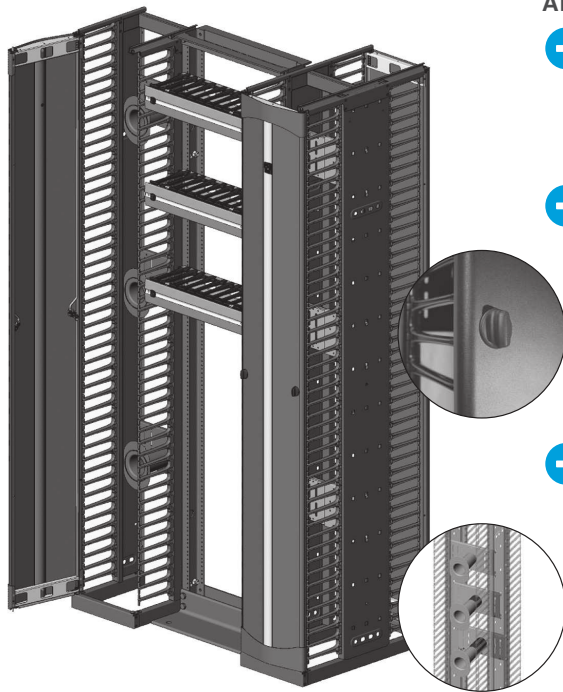


Evolution® Cable Management

Evolution® Cable Manager is a reliable, feature-rich cable management solution that delivers increased performance to match the demands of today's high-density data center applications.



ADVANTAGES

- ➔ **High Performance**
 - Solid construction supports large bundles of heavy cables such as Cat 6a
 - Sturdy T-shaped cable guides resist bending and deflection
- ➔ **Dependability**
 - Variety of cable management accessories help effectively address bend radii requirements and cabling best practices
 - Patented Movable Mid-Section on double-sided managers allows personalized placement of cable management accessories for optimal space utilization
- ➔ **Attention to Detail**
 - Features distinctive look that matches the CPI TeraFrame® Family of Cabinets for a single aesthetic
 - Single-latch door provides easy access to cables

KEY FEATURES

- Movable Mid-Section in double-sided managers moves forward, backward, up and down, allowing increased flexibility in space utilization and accessory placement
- Door opens to the right or left with a single latch
- T-shaped cable guide design resists deflection when loaded with cables
- Rounded edges on the cable guides and at the top of the cable manager protect cables as they enter and exit the storage space
- Rigid trough minimizes movement when installed on the end of a row of racks
- Matches the aesthetics of TeraFrame Cabinets

SPECIFICATIONS

Description:	Vertical and horizontal cable managers for open two- and four-post Rack Systems For indoor use only, in environmentally controlled areas; may not be used outdoors, in harsh environments or in air-handling spaces
Options:	<p>Evolution g1 Single-Sided Vertical Manager includes:</p> <ul style="list-style-type: none"> • Contoured front door with easy-open latches and vertical center feature in contrasting aluminum finish • Rigid cable manager with 1U spaced plastic T-shaped cable guides (fingers) • Three Fixed Accessory Panels at the back of the cable manager • Three large Cable Distribution Spools and Cable Distribution Spool Spacers included with 10"W (250 mm), 12"W (300 mm) and 15"W (380 mm) managers <p>Evolution g2 Double-Sided Vertical Manager includes:</p> <ul style="list-style-type: none"> • Contoured front door with easy-open latches and vertical center feature in contrasting aluminum finish • Rigid cable manager with 1U spaced plastic T-shaped cable guides (fingers) • Rear door with easy-open latches and all black finish • Three Movable Mid-Sections • Three large Cable Distribution Spools and Cable Distribution Spool Spacers included with 10"W (250 mm), 12"W (300 mm) and 15"W (380 mm) managers <p>Evolution g3 Combination Vertical Manager includes:</p> <ul style="list-style-type: none"> • Contoured front door with easy-open latches and vertical center feature in contrasting aluminum finish • Adjustable rear cable rings with spin-open latches on the back side (no rear door/cover) • Three large Cable Distribution Spools and Cable Distribution Spacers included with 10"W (250 mm), 12"W (300 mm) and 15"W (380 mm) managers <p>Evolution Horizontal Cable Manager includes:</p> <ul style="list-style-type: none"> • Contoured front door with snap-hinges and longitudinal center feature in contrasting aluminum finish • Cable manager with plastic T-shaped cable guides (fingers) • (2) chassis styles: solid and with cable pass-through ports
Construction:	Ships in a single carton; Vertical manager is welded and features riveted frame and door. Attaches to CPI Racks with supplied carriage bolts, washers and hex nuts

Global Availability

US & Canada

+1-800-834-4969
Toronto, Ontario, Canada
+905-850-7770
chatsworth.com
techsupport@chatsworth.com

Latin America

+52-55-5203-7525
Toll Free within Mexico
01-800-01-7592
chatsworth.com.co

Europe

+44-1628-524-834
chatsworth.com

Middle East & Africa

Dubai, UAE
+971-4-2602125
chatsworth.ae

Asia Pacific

+86 21 6880-0266
chatsworth.com.cn



CHATSWORTH
PRODUCTS

SPECIFICATIONS

Materials:	Steel and aluminum cable manager, plastic T-shaped cable guides
Finishes:	Black or Glacier White powder coat paint
Packaging:	Ships in a single 100% recyclable carton
Sizes:	See ordering information
Cable Fill:	See cable fill table at www.chatsworth.com/cablefill

USE WITH

- Standard Rack
- Universal Rack
- QuadraRack® 4-Post Frame
- QuadraRack Server Frame
- Adjustable QuadraRack (AQR)
- Adjustable ServerRack (ASR)
- Adjustable Rail QuadraRack (ARQR)
- Adjustable Rail ServerRack (ARSR)

RELATED ACCESSORIES

- Fiber Segregation Kit
- Cable Lashing Bar Kit
- Cable Distribution Spools
- Movable Mid-Sections
- Saf-T-Grip® Reusable Straps

High-Performance Design

CPI Evolution Cable Management is a dependable solution for managing high-density copper cabling on open two- and four-post CPI Rack Systems, delivering increased performance to match the demands of today's data center applications.

Featuring easy-to-use doors with styling that complements the CPI TeraFrame Family of Cabinets, Evolution Cable Manager provides interior features to help maximize the capacity and utility of high-density vertical cable management.

Evolution Vertical Cable Manager includes plastic T-shaped cable guides (fingers) with openings that align with each rack-mount unit (U) space on the rack. The rounded edges on the cable guides and the top of the manager protect cables as they enter and exit the interior storage space. On double-sided managers, the patented Movable Mid-Sections allow personalized placement of Cable Distribution Spools and other cable management accessories to effectively route patch cords. The Movable Mid-Sections can also be positioned for a 50/50, 40/60 or 60/40 front/rear split of the internal cable management space to match cabling requirements.

Vertical managers are available in single-sided, double-sided and combination configurations in five widths and three heights to match a variety of requirements. Combination managers have cable management fingers in the front and cable rings in the back.

Use accessory Fiber Segregation Kits to create a dedicated internal channel for fiber cabling or accessory Cable Lashing Bar Kits to anchor premise cables closer to the mid-sections to increase capacity.

Contact CPI Technical Support, or visit the CPI website (www.chatsworth.com) for configuration assistance.



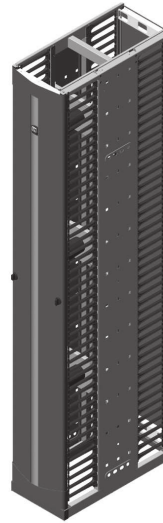
Ordering Information



Evolution g1, Single-Sided Vertical Manager

Evolution g1 Single-Sided Vertical Cable Managers		
Part Number	Height in (mm)	Shipping Weight lb (kg)
35511-X01	72 x 6 x 13.2 (1828 x 150 x 335)	51 (23.1)
35511-X03	84 x 6 x 13.2 (2133 x 150 x 335)	57 (25.9)
35511-X15	96 x 6 x 13.2 (2438 x 150 x 335)	65 (29.5)
35512-X01	72 x 8 x 13.2 (1828 x 200 x 335)	54 (24.5)
35512-X03	84 x 8 x 13.2 (2133 x 200 x 335)	61 (27.7)
35512-X15	96 x 8 x 13.2 (2438 x 200 x 335)	70 (31.8)
35513-X01	72 x 10 x 13.2 (1828 x 250 x 335)	60 (27.2)
35513-X03	84 x 10 x 13.2 (2133 x 250 x 335)	67 (30.4)
35513-X15	96 x 10 x 13.2 (2438 x 250 x 335)	76 (34.5)
35514-X01	72 x 12 x 13.2 (1828 x 300 x 335)	65 (29.5)
35514-X03	84 x 12 x 13.2 (2133 x 300x 335)	73 (33.1)
35514-X15	96 x 12 x 13.2 (2438 x 300 x 335)	82 (37.2)
35515-X01	72 x 15 x 13.2 (1828 x 380 x 335)	74 (33.6)
35515-X03	84 x 15 x 13.2 (2133 x 380 x 335)	83 (37.6)
35515-X15	96 x 15 x 13.2 (2438 x 380 x 335)	90 (40.8)

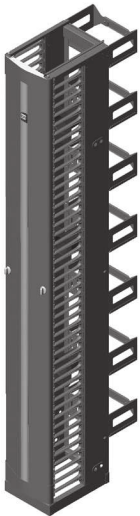
x=Color; 7=Black and E=Glacier White.



Evolution g2, Double-Sided Vertical Manager

Evolution g2 Double-Sided Vertical Cable Managers		
Part Number	Height in (mm)	Shipping Weight lb (kg)
35521-X01	72 x 6 x 24.5 (1828 x 150 x 662)	83 (37.6)
35521-X03	84 x 6 x 24.5 (2133 x 150 x 662)	94 (42.6)
35521-X15	96 x 6 x 24.5 (2438 x 150 x 662)	107 (48.5)
35522-X01	72 x 8 x 24.5 (1828 x 200 x 335)	90 (40.8)
35522-X03	84 x 8 x 24.5 (2133 x 200 x 662)	101 (45.8)
35522-X15	96 x 8 x 24.5 (2438 x 200 x 662)	116 (52.6)
35523-X01	72 x 10 x 24.5 (1828 x 250 x 662)	98 (44.5)
35523-X03	84 x 10 x 24.5 (2133 x 250 x 662)	110 (49.9)
35523-X15	96 x 10 x 24.5 (2438 x 250 x 662)	125 (56.7)
35524-X01	72 x 12 x 24.5 (1828 x 300 x 662)	105 (47.6)
35524-X03	84 x 12 x 24.5 (2133 x 300x 662)	118 (53.5)
35524-X15	96 x 12 x 24.5 (2438 x 300 x 662)	134 (60.8)
35525-X01	72 x 15 x 24.5 (1828 x 380 x 662)	115 (52.2)
35525-X03	84 x 15 x 24.5 (2133 x 380 x 662)	129 (58.5)
35525-X15	96 x 15 x 24.5 (2438 x 380 x 662)	147 (66.7)

x=Color; 7=Black and E=Glacier White.



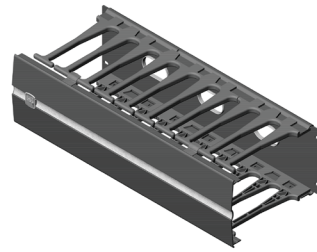
Evolution g3, Combination Vertical Manager

Evolution g3 Combination Vertical Cable Managers		
Part Number	Height in (mm)	Shipping Weight lb (kg)
35571-X01	72 x 6 x 20.2 (1828 x 150 x 512)	61 (27.7)
35571-X03	84 x 6 x 20.2 (2133 x 150 x 512)	68 (30.8)
35571-X15	96 x 6 x 20.2 (2438 x 150 x 512)	77 (34.9)
35572-X01	72 x 8 x 20.2 (1828 x 200 x 512)	64 (29.0)
35572-X03	84 x 8 x 20.2 (2133 x 200 x 512)	72 (32.7)
35572-X15	96 x 8 x 20.2 (2438 x 200 x 512)	82 (37.2)
35573-X01	72 x 10 x 20.2 (1828 x 250 x 512)	70 (31.8)
35573-X03	84 x 10 x 20.2 (2133 x 250 x 512)	78 (35.4)
35573-X15	96 x 10 x 20.2 (2438 x 250 x 512)	88 (39.9)
35574-X01	72 x 12 x 20.2 (1828 x 300 x 512)	75 (34.0)
35574-X03	84 x 12 x 20.2 (2133 x 300x 512)	84 (38.1)
35574-X15	96 x 12 x 20.2 (2438 x 300 x 512)	94 (42.6)
35575-X01	72 x 15 x 20.2 (1828 x 380 x 512)	84 (38.1)
35575-X03	84 x 15 x 20.2 (2133 x 380 x 512)	94 (42.6)
35575-X15	96 x 15 x 20.2 (2438 x 380 x 512)	102 (46.3)

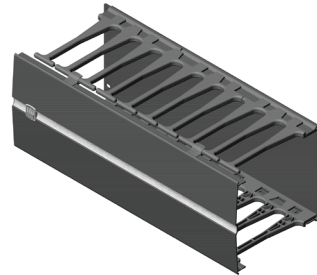
x=Color; 7=Black and E=Glacier White.



Complementing the same style as Evolution Vertical Cable Manager, Evolution Horizontal Cable Manager provides a dependable horizontal pathway to organize and store cables above patch panels and network switches.



35441-XXX, with cable openings



35442-XXX, solid

KEY FEATURES

- Contoured, snap-on front door opens up or down and complements the styling of Evolution Vertical Cable Manager
- (2) chassis styles; solid or with cable pass-through ports
- Plastic T-shaped cable guides organize cables as they enter and exit the manager

Evolution Horizontal Cable Manager

Available in four heights; 1U, 2U, 3U, 4U The snap-on door complements the styling of Evolution Vertical Cable Manager. Swing the cover up or down to access cables.

Evolution Horizontal Cable Manager includes plastic T-shaped cable guides to organize patch cords and jumper cords as the cords enter and exit the manager to make individual equipment connections. Two chassis styles are available. Choose the solid chassis option for use in areas where thermal isolation is needed. Use the chassis with pass-through cable ports to allow patch cords to pass front-to-rear. Available in four heights.

Part Number	Chassis Style	Description H x W x D in (mm)	Shipping Weight lb (kg)
35441-X01*	Solid	1U x 19 x 8.2 (208)	3 (1.4)
35441-X02	With cable pass-through ports	2U x 19 x 8.2 (208)	4 (1.8)
35441-X03	With cable pass-through ports	3U x 19 x 8.2 (208)	5 (2.4)
35441-X04	With cable pass-through ports	4U x 19 x 8.2 (208)	7 (3.2)
35442-X02	Solid	2U x 19 x 8.2 (208)	4 (1.8)
35442-X03	Solid	3U x 19 x 8.2 (208)	5 (2.4)
35442-X04	Solid	4U x 19 x 8.2 (208)	7 (3.2)

x=Color; 7=Black and E=Glacier White. 1U horizontal managers available with solid chassis only.

Cable Management Accessories



Cable Distribution Spools

Cable Distribution Spools provide slack management and strain relief for patch cords and jumper cables inside Evolution Vertical Cable Managers.

- (3) large cable distribution spools are included with each 10"W (250 mm), 12"W (300 mm) and 15"W (380 mm) vertical cable manager, (will not fit in other sizes)
- Attaches to the fixed adapter panels on the back of single-sided vertical cable managers and the Movable Mid-Sections inside double-sided vertical cable managers
- Spools are 2.75" (69.9 mm) in diameter and 5.9"L (150 mm); black plastic
- Each kit includes 4 spools and mounting hardware



Cable Distribution Spool Spacer Kit

The Cable Distribution Spool Spacer Kit is used with the Cable Distribution Spool to offset the spool so that the front edge of the spool is close to the front edge of cable management fingers in the Evolution g2 Double-Sided Cable Managers.

- Use one Cable Distribution Spool Spacer with each Cable Distribution Spool when the Movable Mid-Sections in the cable manager are set for a 50/50 front/rear split
- Use two Cable Distribution Spool Spacers with each Cable Distribution Spool when the Movable Mid-Sections in the cable manager are set for a 60/40 front/rear split; stack both of the Cable Distribution Spool Spacers on the 60% side
- Spacers are 2.8" (71 mm) in diameter x 2.5"H (64 mm); and made from black ABS plastic
- Each kit includes 8 spacers and mounting hardware

Part Number	Description	Shipping Weight lb (kg)
15008-001	Cable Distribution Spools, Black	2 (0.9)

Part Number	Description	Shipping Weight lb (kg)
35505-001	Cable Distribution Spool Spacer Kit	1 (0.5)

Accessories



Fiber Segregation Kit

Fiber Segregation Kit creates a separate pathway for fiber cables and patch cords inside Evolution Vertical Cable Managers.

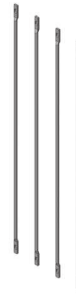
- The number of kits allowed per manager depends on the width of the vertical cable manager and the position of the Movable Mid-Section in double-sided managers.

Cable Manager Width in (mm)	Double-Sided with 60/40 Front/Rear Split	All Other Managers with 50/50 Front/Rear Split
6 (150)	1	0
8 (200)	1	1
10 (250)	2	1
12 (300)	2	2
15 (380)	2	2

- Each kit includes (2) 20.5"H (521 mm) J-shaped steel mounting brackets, (8) plastic Fiber Segregation Spools and mounting hardware that create a separate pathway inside the vertical cable manager when assembled and installed
- The Fiber Segregation Spools turn 360° with stops at 90° allowing easy access to fiber cables
- The assembled bracket is 3.8"W x 4.3"D (97 mm x 109 mm) with a 2.4"W x 4.0"D (61 mm x 102 mm) interior space and includes mounting hardware

Part Number	Description	Shipping Weight lb (kg)
35475-701	Fiber Segregation Kit	6 (2.7)

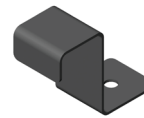
Color is black.



Cable Lashing Bar Kit

- Use up to 6 cable lashing bars (front/rear) in 6"W (150 mm) vertical cable managers and up to 10 cable lashing bars (front/rear) in 8"W (200 mm), 10"W (250 mm), 12"W (300 mm) and 15"W (380 mm) vertical cable managers
- Each kit includes (4) round .23" (5.7 mm) diameter x 20.6"L (524 mm) steel lashing bars and mounting hardware

Part Number	Description	Shipping Weight lb (kg)
35473-001	Cable Lashing Bar Kit	2 (0.9)



Evolution Floor Bracket

Evolution Floor Bracket secures the base of Evolution Vertical Cable Managers to the floor when located at the end of a row of equipment racks.

- Sold in packs of 12
- Order floor attachment hardware separately

Part Number	Description	Shipping Weight lb (kg)
35506-701	Floor Bracket, Pack of 12	3 (1.4)

Color is black.



Solid Rear Panel

Solid Rear Panel encloses the rear of the Evolution g1 Single-Sided Vertical Cable Manager.

- Hangs from the top of the manager; attaches to the back of the fixed accessory panels with included hardware
- Install Cable Distribution Spools and any additional fixed accessory panels before attaching the Solid Rear Panel
- Sold individually or in pairs; select to match the width and height of the cable manager



Cable Divider Bar Kit

Cable Divider Bar Kit provides tie points for cables inside Evolution Vertical Cable Managers and divides the interior of the cable manager to create multiple pathways for cables.

- Attaches to the fixed accessory panels inside vertical cable managers
- Each Cable Divider Bar is 5.75"H x 1"W x 20"L (146 mm x 25 mm x 510 mm)
- Use side-by-side to create multiple pathways in 10"W (250 mm) or wider cable managers
- Each kit includes four Cable Divider Bars and mounting hardware

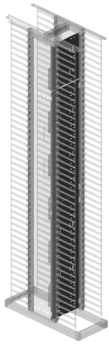
Part Number	Description	Shipping Weight lb (kg)
35503-701	Cable Divider Bar Kit	3 (1.4)

Color is black.

Height ft (m)	6"W (150 mm)	8"W (200 mm)	10"W (250 mm)	12"W (300 mm)	15"W (380 mm)	Shipping Weight lb (kg)
	Part Number (each)					
6 (1.8)	35501-X01	35501-X04	35501-X07	35501-X10	35501-X13	9 (4.1)
7 (2.1)	35501-X02	35501-X05	35501-X08	35501-X11	35501-X14	11 (5.0)
8 (2.4)	35501-X03	35501-X06	35501-X09	35501-X12	35501-X15	12 (5.4)
Part Number (Pair)						
6 (1.8)	35501-X51	35501-X54	35501-X57	35501-X60	35501-X63	34 (15.4)
7 (2.1)	35501-X52	35501-X55	35501-X58	35501-X61	35501-X64	42 (19.1)
8 (2.4)	35501-X53	35501-X56	35501-X59	35501-X62	35501-X65	46 (20.9)

x=Color; 7=Black, E=Glacier White. Shipping weights are for 15"W (380 mm) Solid Rear Panels.

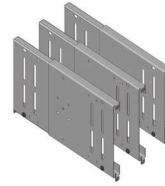
Accessories



Solid Mid Panel

Solid Mid Panel covers and divides the front and rear of the Evolution g2 Double-Sided Vertical Cable Manager.

- Nested 2-piece assembly telescopes to cover the width of the manager; attaches to the back of the Movable Mid-Sections inside the manager with included hardware
- Does not block attachment of additional Moveable Mid-Sections or other cable management accessories inside the manager
- Includes (1) Moveable Mid-Section for 7'H (2.1 m) manager and (2) for 8'H (1.8 m) manager.
- Sold individually or in packs of 4; select to match the width and height of the cable manager



Movable Mid-Section Kit

Kit includes three additional Movable Mid-Sections for the Evolution g2 Double-Sided Vertical Cable Manager.

- Select to match the width of the cable manager
- Includes installation hardware

Height ft (m)	6"W (150 mm)	8"W (200 mm)	10"W (250 mm)	12"W (300 mm)	15"W (380 mm)	Shipping Weight lb (kg)
	Part Number (each)					
6 (1.8)	35497-X01	35497-X04	35497-X07	35497-X10	35497-X13	14 (6.4)
7 (2.1)	35497-X02	35497-X05	35497-X08	35497-X11	35497-X14	16 (7.3)
8 (2.4)	35497-X03	35497-X06	35497-X09	35497-X12	35497-X15	18 (8.2)
Part Number (Pack of 4)						
6 (1.8)	35497-X51	35497-X54	35497-X57	35497-X60	35497-X63	58 (26.3)
7 (2.1)	35497-X52	35497-X55	35497-X58	35497-X61	35497-X64	62 (28.1)
8 (2.4)	35497-X53	35497-X56	35497-X59	35497-X62	35497-X65	70 (31.8)

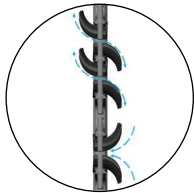
x=Color; 7=Black, E=Glacier White. Shipping weights are for 15"W (380 mm) Solid Mid Panels.

Tool-less Bend Radius Kit for Fiber Patch Cords

Tool-less Bend Radius Kit for Fiber Patch Cords ensures proper bend radius support for fiber optic patch cords when transitioning through T-shaped cable guides. It snaps onto the finger manager without any tools, and can be used for new or retrofit applications.

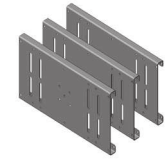


- Provides proper bend radius support for fiber optic patch cords
- Tool-less installation
- May be installed in upward or downward orientations on either side of a T-shaped cable guide
- Available in packs of 10 or 50



Part Number	Description	Shipping Weight lb (kg)
32697-001	Tool-less Bend Radius Kit for Fiber Patch Cords, Pack of 10	1 (0.5)
32697-002	Tool-less Bend Radius Kit for Fiber Patch Cords, Pack of 50	3 (1.4)

Notes: Color is Black.



Fixed Accessory Panel Kit

Kit includes three additional fixed accessory panels for Evolution g1 Single-Sided Vertical Cable Manager.

- Select to match the width of the cable manager
- Includes installation hardware

Part Number	Description Width - in (mm)	Shipping Weight lb (kg)
35492-X01	For 6 (150) Evolution g1 Single-Sided Vertical Cable Manager	3 (1.4)
35492-X02	For 8 (200) Evolution g1 Single-Sided Vertical Cable Manager	4 (1.8)
35492-X03	For 10 (250) Evolution g1 Single-Sided Vertical Cable Manager	5 (2.3)
35492-X04	For 12 (300) Evolution g1 Single-Sided Vertical Cable Manager	6 (2.7)
35492-X05	For 15 (380) Evolution g1 Single-Sided Vertical Cable Manager	7 (3.2)

x=Color; 7=Black, E=Glacier White.

Solid Side Panel

Solid Side Panel covers the side of a Evolution g2 Double-Sided Vertical Cable Manager located at the end of a row of equipment racks.

- Hangs from the top of the manager and attaches at the bottom of the manager with included snap-in hardware
- Sold individually or in pairs; select to match the height of the cable manager



Part Number	Description Height - ft (m)	Shipping Weight lb (kg)
35502-X01	6 (1.8), Each	16 (7.3)
35502-X02	7 (2.1), Each	19 (8.6)
35502-X03	8 (2.4), Each	21 (9.5)
35502-X51	6 (1.8), 1 Pair	30 (13.6)
35502-X52	7 (2.1), 1 Pair	35 (15.9)
35502-X53	8 (2.4), 1 Pair	39 (17.7)

x=Color; 7=Black, E=Glacier White.



CPI now offers Extended Limited Warranties on CPI-Branded Electronic products, available for two additional years beyond the expiration of the Original Warranty Period (3 years).

Interested in learning more about our Cable Managers? Call us at 800-834-4969, or email Technical Support at techsupport@chatsworth.com.

Contact CPI Customer Service, or visit www.chatsworth.com/warranty for more information.