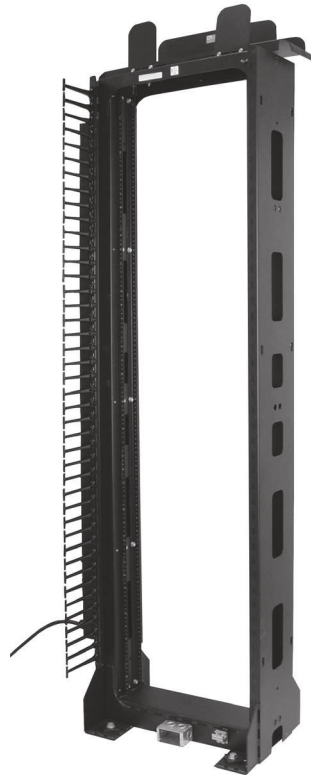


SeismicFrame® Two-Post Rack

Support rack-mount network equipment in data centers and premise networks where seismic activity exists.

KEY FEATURES

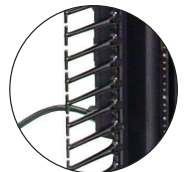
- Welded, steel network equipment rack engineered specifically to protect equipment in areas with seismic activity
- Independently seismic-tested and certified; meets industry-recognized Telcordia® Technologies, Inc. GR-63-CORE Network Equipment Building Systems (NEBS) Zone 4 requirements
- 1,000 lb (453.6 kg) load rating for seismic areas
- Supports 19" EIA-310-D compliant rack-mount equipment like patch panels and network switches; 23" W version also available
- 19" W rack fits within a 24" (610 mm) raised access floor tile
- Available with #12-24 threaded or square-punched adjustable-depth equipment mounting rails
- Equipment mounting rails have marked and numbered rack-mount spaces (U); numbering can start at the top or bottom of the rack
- Fully bonded rack has two masked grounding locations and includes a Two Mounting Hole Ground Terminal Block for easy connection to the Telecommunications Grounding Busbar
- Vertical Power Strips and T-shaped Cable Management Fingers attach directly to the rack channel to provide power and cable distribution for equipment



ADVANTAGES

- ➔ **Adjustable Depth Mounting Rails**
Set 6" (150 mm) or 3" (80 mm) apart
- ➔ **Cable Management**
Built-in locations on rack
- ➔ **Two Mounting Hole Ground Terminal Block**
Included for easy connection to the Telecommunications Grounding Busbar

California
OSHPD
OPM-0112-13



SPECIFICATIONS

| | |
|-----------------------|--|
| Includes | Welded, steel frame |
| | Equipment mounting rails, two pairs |
| | 50 each equipment mounting screws/cage nuts 1 each Two Mounting Hole Ground Terminal Block |
| Available Sizes | Height: 7' (2.1 m) |
| | Widths: 24" (610 mm) and 28" (710 mm) Depth: 15" (380 mm) at base; 9.6" (244 mm) vertical channels |
| Equipment Space | Height: 44U |
| | Width: 19" EIA or 23" |
| | Rail depths: 6" (150 mm) or 3" (80 mm) |
| Equipment Support | Two pairs of L-shaped equipment mounting rails fixed in place at 6"D (150 mm) or 3"D (80 mm) 19" W EIA-310-D compliant or 23" W |
| | Universal Hole Pattern, 5/8"-5/8"-1/2" alternating vertical mounting hole spacing |
| | Threaded #12-24 or square-punched equipment mounting holes |
| Load Capacity | Includes 50 each mounting screws or cage nuts and mounting screws |
| | 1000 lb (453.6 kg) of equipment in seismic areas |
| Bonding and Grounding | Rack components are bonded through welds |
| | Mounting rails are bonded to the rack through attachment hardware; optional zinc-plated mounting rails provide direct metal contact with rack-mount equipment |
| | Includes two masked ground connection points located at the top and base of the rack Includes one Two Mounting Hole Ground Terminal; Block for connection to the Telecommunications; Grounding Busbar |

Availability: Global

US & Canada

+1-800-834-4969
Toronto, Ontario, Canada
+905-850-7770
chatsworth.com
techsupport@chatsworth.com

Latin America

+52-55-5203-7525
Toll Free within Mexico
01-800-01-7592
chatsworth.com.co

Europe

+44-1628-524-834
chatsworthproducts.co.uk

Middle East & Africa

Dubai, UAE
+971-4-2602125
chatsworth.ae

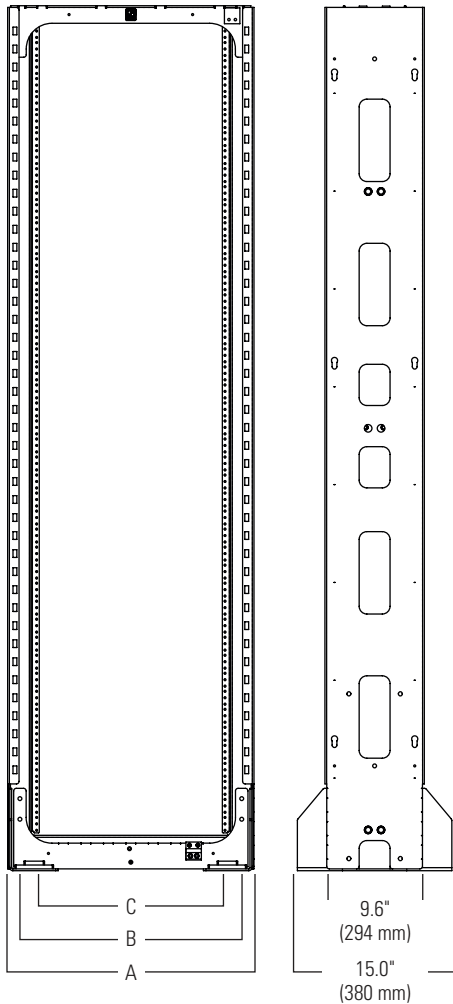
Asia Pacific

+86 21 6880-0266
chatsworth.com.cn



CHATSWORTH
PRODUCTS

DIMENSIONS



| Description | 19 in (mm) | 23 in (mm) |
|--------------------|-------------|-------------|
| Overall Width (A) | 24.0 (610) | 28.0 (710) |
| Frame Opening (B) | 19.3 (490) | 23.3 (592) |
| Rail Clearance (C) | 17.75 (450) | 21.75 (552) |

| | |
|-----------------|--|
| Certifications: | EIA-310-D compliant; UL Listed NWIN per UL 60950, File E227626 |
| | OSHDP OPM-0249-13, California, Office of Statewide Health Planning and Development (OSHDP), Preapproval of Manufacturer's Certification (OPM) |
| | GR-63-CORE, NEBS, Zone 4 |
| | US Patent Number: 8,424,691 |
| Material | Steel |
| Construction | Welded |
| | Mounting rails attach with hardware |
| Finish | Epoxy-polyester hybrid powder coat paint in black, gray or computer beige |
| | Mounting rails are painted or zinc-plated |
| Installation | Each rack must be secured to the structural floor |
| | Order a seismic-rated, concrete anchor kit separately |
| | Use M12 x 5-1/8" Hilti HSL-3-G Heavy Duty Sleeve Anchors or equivalent |
| | When bayed in a continuous row, the spacing between racks should be determined by a licensed structural engineer familiar with seismic applications and codes. Each installation requirement varies. |
| | Minimum recommended thickness of the concrete slab on the ground floor is 5-1/2" (140 mm) |
| Environment | For indoor use only, in environmentally controlled areas; may not be used outdoors, in industrial or harsh environments, or in plenum spaces |

Design Features

CPI's SeismicFrame® Two-Post Rack is designed specifically to support network equipment in areas with seismic activity. When earthquakes occur, equipment racks move back-and-forth with the building causing violent vibration through racks and equipment. An earthquake can easily damage or destroy non-seismic racks and equipment that are not carefully braced. The welded, steel SeismicFrame Two-Post Rack resists the swaying motion caused by earthquakes to reduce the amount of vibration transferred through the rack to equipment and is less likely to be damaged during a seismic event, which means faster network recovery.

The SeismicFrame Two-Post Rack supports 19" W EIA-310-D compliant or 23" W equipment with two pairs of mounting rails that can be spaced 6" (150 mm) or 3" (80 mm) apart. The mounting rails are marked and numbered with rack-mount spaces (U) and can be attached so that numbering starts at the bottom or top of the rack mount space. Choose threaded or square-punched mounting rails with a painted or zinc-plated finish. The mounting holes in threaded mounting rails are tapped with #12-24 threads to speed installation of panel-mount equipment with #12-24 screws. The square-punched rails accept cage nut hardware allowing you to change threads at each U to match equipment mounting requirements.

CPI's SeismicFrame Two-Post Rack ships fully assembled and includes a Two Mounting Hole Ground Terminal Block for bonding the rack to the Telecommunications Grounding Busbar and 50 each equipment mounting screws or cage nuts and screws. The rack is rated for a 1000 lb (453.6 kg) seismic Zone 4 load per Section 4.4 of the Telcordia® Technologies, Inc. GR-63-CORE Network Equipment Building Systems (NEBS) requirements.

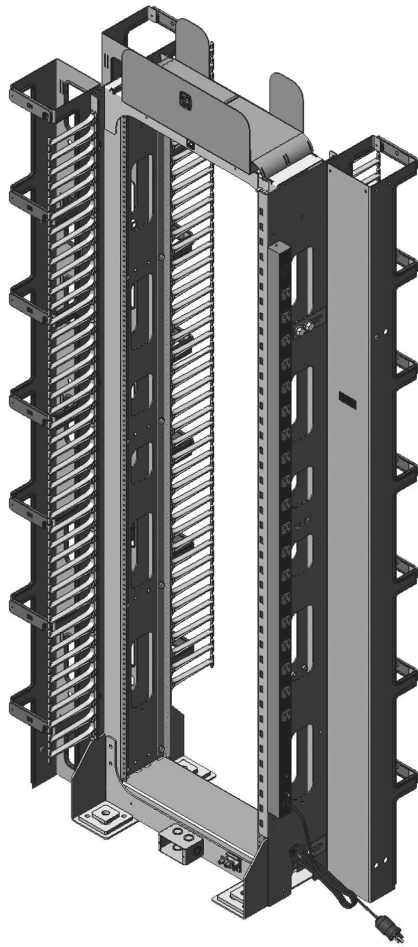
See reverse for product details. Contact CPI Technical Support, or visit the CPI website (www.chatsworth.com/seismic) for configuration assistance.

USE WITH

- SeismicFrame Two-Post Rack Vertical Cabling Section
- Top-Mount Cable Waterfall Tray
- Cable Management Fingers Kit
- SeismicFrame Two-Post Rack Concrete Floor Anchor Kit

RELATED PRODUCTS

- Heavy Duty Equipment Shelf for 6" (150 mm) Channel
- Vertical Cabling Section Offset Mounting Bracket Kit for Single-Sided Wide Vertical Cabling Section
- 3" (80 mm) Channel Rack-To-Runway Mounting Plate
- Cable Runway J-Bolt Kit



ORDERING INFORMATION

| SeismicFrame® Two-Post Rack | | |
|-----------------------------|--|----------------------------|
| Part Number | Description H x W ft (m) | Shipping Weight lb (kg) |
| 13853-X03 | 7 (2.1) x 19", 44U, Tapped #12-24 Zinc Rails | 180 (81.6) |
| 13854-X03 | 7 (2.1) x 19", 44U, Square-Punched Zinc Rails | 178 (80.7) |
| 13855-X03 | 7 (2.1) x 19", 44U, Tapped #12-24 Painted Rails | 180 (81.6) |
| 13856-X03 | 7 (2.1) x 19", 44U, Square-Punched Painted Rails | 178 (80.7) |
| 13883-X03 | 7 (2.1) x 23", 44U, Tapped #12-24 Zinc Rails | 185 (83.9) |
| 13884-X03 | 7 (2.1) x 23", 44U, Square-Punched Zinc Rails | 183 (83.0) |
| 13885-X03 | 7 (2.1) x 23", 44U, Tapped #12-24 Painted Rails | 185 (83.9) |
| 13886-X03 | 7 (2.1) x 23", 44U, Square-Punched Painted Rails | 183 (83.0) |

Notes: X=Color; 1=Gray, 2=Computer Beige, 7=Black.
Install using (4) seismic-rated concrete anchors (sold separately).

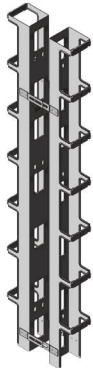
Cable Management:

- The top of the rack is punched with attachment points for the CPI Top-Mount Cable Waterfall Tray and Cable Runway
- Attach 9" W (230 mm), 12" W (300 mm), 15" W (380 mm) and 18" W (460 mm) Cable Runway to racks in perpendicular (front-to-back) orientation with the Cable Runway J-Bolt Kit; 23" W racks will also support 20" W (510 mm) Cable Runway
- Attach 12" W (300 mm) to 24" W (610 mm) Cable Runway in parallel (side-to-side) orientation with the 3" W (80 mm) Channel Rack-To-Runway Mounting Plate.
- The front of the rack is punched with attachment points for the CPI Cable Management Fingers Kits
- The sides of the rack are punched with three pairs of centered, 1/2-20 threaded attachment points for CPI SeismicFrame Two-Post Rack Vertical Cabling Section
- Attach a CPI Single-Sided Wide Vertical Cabling Section to the side of the rack with the CPI Vertical Cabling Section Offset Mounting Bracket Kit
- Evolution® Cable Management and MCS-EFX Master Cabling Section with Extended Fingers will also attach to the side of the rack

Shelves:

- Use CPI Heavy Duty Equipment Shelf for 6" (150 mm) Channel with the rack's mounting rails set 6" (150 mm) apart
- When rails are set 3" W (80 mm) apart, the maximum shelf width on 19" W racks is 19.3" W (490 mm) and the maximum shelf width on 23" W racks is 23.3" W (592 mm)

ACCESSORIES



SeismicFrame Two-Post Rack Vertical Cabling Section

Provide a double-sided, front and rear cable pathway next to SeismicFrame Two-Post Rack.

- Separate front and rear 6"W x 6.38"D (150 mm x 162 mm) cable managers attach with included offset brackets to align with the front and rear of the rack
- Large cable pass-through ports on the back of each manager align with ports in the side of the frame; spin-open plastic latches secure cables inside the managers
- Includes one Single-Sided Cable Management Fingers Kit to organize cables by U
- Made of aluminum
- Includes installation hardware



Cable Management Fingers Kit

Organize patch cords and jumper cables by U.

- 7U T-shaped plastic cable guides snap onto the front and rear of the rack frame
- Openings between the T-shaped guides align with each U on the rack
- Single-Sided Kit includes 12 cable guides for one side (front or rear) of the rack
- Double-Sided Kit includes 24 cable guides for both sides (front and rear) of the rack

| SeismicFrame® Two-Post Rack Accessories | | |
|---|---|----------------------------|
| Part Number | Description | Shipping Weight lb (kg) |
| 13704-X03 | VCS Vertical Cabling Section | 35 (15.9) |
| 13696-001 | Cable Management Fingers Kit, Single-Sided, Black | 7 (3.2) |
| 13696-002 | Cable Management Fingers Kit, Double-Sided, Black | 14 (6.4) |
| 13699-701 | VCS Offset Mounting Bracket Kit, Black | 2 (0.9) |

Notes: X=Color; 1=Gray, 2=Computer Beige, 7=Black.



Vertical Cabling Section (VCS) Offset Mounting Bracket Kit

Attach a CPI Single-Sided Wide Vertical Cabling Section to the side of the SeismicFrame Two-Post Rack so that it aligns with the front of the rack.

- Kit includes four Offset Mounting Brackets
- Use two brackets per side to attach the Vertical Cabling Section
- Brackets are slotted allowing front-to-rear adjustment
- Made of steel

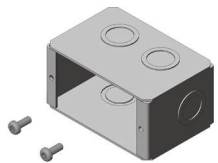
ACCESSORIES



Vertical Power Strip Mounting Hardware Kit

Attach CPI 33"L (711 mm) Vertical Power Strips and PDUs directly to the side of SeismicFrame Two-Post Rack or the back of the SeismicFrame Two-Post Rack Vertical Cabling Section.

- Includes mounting hardware that allows tool-less attachment of two CPI 33"L (711 mm) Vertical Power Strips or PDUs to the keyholes on the sides of the SeismicFrame Two-Post Rack
- Top/Bottom keyholes are spaced 64.75" (1645 mm) apart, matches CPI eConnect PDUs
- Top/Middle keyholes are spaced 28" (711 mm) apart; matches CPI 33"L (838 mm) Vertical Power Strips



Duplex Electrical Outlet Box

Provides a location for a power connection at the base of the rack.

- Includes a single-gang electrical outlet box for a single duplex receptacle and two self-tapping Torx head T25 installation screws
- Outlet box is welded steel, 3-3/4"H x 1-13/16"W x 2-1/2"D (95 mm x 46 mm x 64 mm) with a 15.5 in³ (250 cm³) wiring capacity, has eight (four accessible) concentric knockouts for 1/2" or 3/4" conduit, and is zinc galvanized for corrosion protection
- UL Listed



SeismicFrame Two-Post Rack Concrete Floor Anchor Kit

Attach SeismicFrame Two-Post Rack to a concrete slab floor.

- Includes four M12 x 5-1/8" Hilti HSL-3-G Heavy Duty Sleeve Anchors
- When bayed in a continuous row, spacing between racks should be determined by a licensed engineer familiar with seismic applications and codes.
- Minimum recommended thickness of the concrete slab on the ground floor is 5-1/2" (140 mm)



Tool-less Bend Radius Kit for Fiber Patch Cords

Tool-less Bend Radius Kit for Fiber Patch Cords ensures proper bend radius support for fiber optic patch cords when transitioning through T-shaped cable guides. It snaps onto the finger manager without any tools, and can be used for new or retrofit applications.

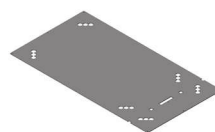
- Provides proper bend radius support for fiber optic patch cords
- Tool-less installation
- May be installed in upward or downward orientations on either side of a T-shaped cable guide
- Available in packs of 10 or 50

Interested in learning more about our Cable Managers? Call us at 800-834-4969, or email Technical Support at techsupport@chatsworth.com.

| SeismicFrame® Two-Post Rack Accessories | | |
|---|--|-------------------------|
| Part Number | Description | Shipping Weight lb (kg) |
| 13697-001 | Vertical Power Strip Mounting Kit, Clear | 1 (0.5) |
| 13698-001 | Duplex Electrical Outlet Box, Zinc | 1 (0.5) |
| 13702-001 | Concrete Floor Anchor Kit, Zinc-Plated | 3 (1.4) |
| 13703-701 | Floor Drilling Template, Black | 6 (2.7) |

| Additional Accessories | | |
|------------------------|--|-------------------------|
| Part Number | Description | Shipping Weight lb (kg) |
| 15275-X01 | Top-Mount Cable Waterfall Tray | 14 (6.4) |
| 40605-001 | #12-24 Screws, Pack of 50, Zinc | 1 (0.5) |
| 40605-005 | #12-24 Screws, Pack of 50, Black | 1 (0.5) |
| 12637-001 | M6 Cage Nuts and Screws, pack of 25, Gold | 1 (0.5) |
| 12638-001 | #10-32 Cage Nuts and Screws, Pack of 25, Zinc | 1 (0.5) |
| 12639-001 | #12-24 Cage Nuts and Screws, Pack of 25, Black | 1 (0.5) |
| 12293-X19 | Heavy Duty Shelf for 6" (150 mm) Channel, For 19" Rack | 10 (4.5) |
| 10595-X12 | 3" (80 mm) Channel Rack-To-Runway Mounting Plate Using J-Bolts 9 to 12" W (230 mm to 300 mm) Runway, Steel | 5 (2.3) |
| 10595-X18 | 3" (80 mm) Channel Rack-To-Runway Mounting Plate Using J-Bolts 15 to 18" W (380 mm to 460 mm) Runway, Steel | 7 (3.2) |
| 12408-X24* | 3" (80 mm) Channel Rack-To-Runway Mounting Plate Using J-Bolts 20 to 24" W (510 mm to 610 mm) Runway, Aluminum | 4 (1.8) |
| 32697-001 | Tool-less Bend Radius Kit for Fiber Patch Cords, Pack of 10, Black | 1 (0.5) |
| 32697-002 | Tool-less Bend Radius Kit for Fiber Patch Cords, Pack of 50, Black | 3 (1.4) |

X=Color; 1=Gray, 2=Computer Beige, 7=Black, E=Glacier White. 10595 is available in (-0) for Gold Finish color. Kits include gold color hardware; gray and black kits include black color hardware. *P/N 12408-X24 and 12409-X24 include hat-shaped mounting plate that adds 1.25" to the height of the rack.



SeismicFrame Two-Post Rack Floor Drilling Template

Quickly and easily locate and drill holes for SeismicFrame Two-Post Rack floor anchors.

- Durable 28"W x 15"D (710 mm x 380 mm) aluminum template locates floor mounting holes for 19"W and 23"W SeismicFrame Two-Post Racks
- Notched to indicate outside width of the 19"W rack for easy alignment when installing multiple racks



CPI now offers Extended Limited Warranties on CPI-Branded Electronic products, available for two additional years beyond the expiration of the Original Warranty Period (3 years).

Contact CPI Customer Service, or visit www.chatsworth.com/warranty for more information.