

# Product Cut Sheet

## 110 CUSTOMIZABLE FRAME MOUNTING BRACKETS

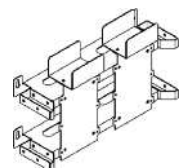
110D Block Mounting Brackets are designed for wall- or rack-mount, providing integrated wire management and mounting surfaces for 100 pair or 300 pair 110D blocks. Separate cabling and jumper paths allow for maximum cabling capacity and ease of installation.

Four 600 pair Mounting Brackets will mount to each side of any 19"W CPI Rack. Four 900 pair or three 1800 pair Mounting Brackets will mount to each side of any 35"W CPI Rack.

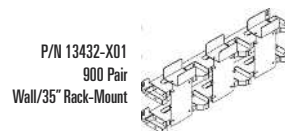
The single-sided 110 Customizable Frame supports up to 4500 pair while the double-sided model holds up to 9000 pair. Multiple racks can also be bayed together. The steel frame consists of three vertical channels and top and bottom panels. Openings between each channel provide space for vertical cable management.

- Supports high-density 110D blocks without feet
- Snap-on horizontal and preassembled vertical cable rings improve cable organization and performance
- Top and base angles can be removed for mounting the frame to the wall
- Threaded studs accommodate compression lugs to provide effective grounding

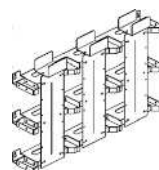
For more information, contact an authorized CPI distributor, call CPI Technical Support at 800-834-4969 or visit [www.chatsworth.com](http://www.chatsworth.com)



P/N 13431-X01  
600 Pair  
Wall/19"  
Rack-Mount



P/N 13432-X01  
900 Pair  
Wall/35" Rack-Mount

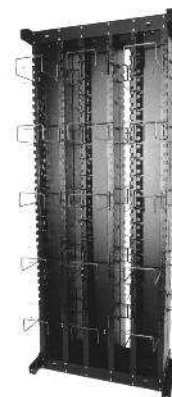


P/N 13433-X01  
1800 Pair  
Wall/35" Rack-Mount

Part Number	Description
13431-X01	600 Pair Manager for 19" Rack or Wall-Mount
13432-X01	900 Pair Manager for 35" Rack or Wall-Mount
13433-X01	1800 Pair Manager for 35" Rack or Wall-Mount

X=color: 1=Gray, 2=Computer Beige, 5=Clear, 7=Black, E=Glacier White

**Purchase the following item separately (not available from CPI):**  
110D Type Wiring Block Mounting Rivet Kit for blocks



Part Number	Description	Shipping Weight
12922-X01	36.32"W x 84"H x 20.29"D, Single-Sided (922.5 mm x 2130 mm x 515.4 mm)	169 lb (76.7 kg)
12923-X01	36.32"W x 84"H x 29.6"D, Double-Sided (922.5 mm x 2130 mm x 752.0 mm)	295 lb (133.8 kg)

X=color: 1=Gray, 2=Computer Beige, 5=Clear, 7=Black, E=Glacier White

800-834-4969 in U.S. & Canada • [www.chatsworth.com](http://www.chatsworth.com)



CHATSWORTH PRODUCTS

©2013 Chatsworth Products, Inc. All rights reserved. CPI, CPI Passive Cooling, GlobalFrame, MegaFrame, Saf-T-Grip, Seismic Frame, SlimFrame, TeraFrame, Cube-IT Plus, Evolution, OnTrac, Velocity and QuadraRack are federally registered trademarks of Chatsworth Products. eConnect and Simply Efficient are trademarks of Chatsworth Products. All other trademarks belong to their respective companies. 6/13