

Standard Swing Gate Wall Rack



The Standard Swing Gate Wall Rack provides easy access to the rear of equipment, making it the ideal choice for supporting patch panels and switches.

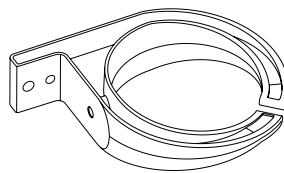
- Dual hinges open to right or left, stopping in 90° position
- EIA-310-D compliant
- Universal 5/8" - 5/8" - 1/2" (15.9 mm - 15.9mm - 12.7 mm) alternating hole pattern
- Rack-mount spaces are marked and numbered
- Includes (50) #12-24 mounting screws. Black painted racks ship with black screws; other racks ship with zinc screws
- Supports 100 lb (45.4 kg) of equipment in the open and closed position when securely mounted
- Load capacity can be increased to 150 lb (68 kg) with optional Heavy Duty Swing Gate Kit
- Supports single-sided and double-side shelves
- Ships partially assembled with installation hardware



| Standard Swing Gate Wall Rack | | | | | | | |
|-------------------------------|-------------------|--------|----------|------------------------------|------------|------------|-------------------------|
| Part Number | Usable Dimensions | | | Overall Dimensions - in (mm) | | | Shipping Weight lb (kg) |
| | Height | Width | Depth | Height | Width | Depth | |
| 11790-X12 | 12U | 19"EIA | 11 (280) | 29.1 (739) | 21.7 (551) | 12.2 (310) | 22 (10.0) |
| 11790-X18 | 12U | 19"EIA | 17 (430) | 29.1 (739) | 21.7 (551) | 18.2 (462) | 24 (10.9) |
| 11790-X25 | 12U | 19"EIA | 24 (610) | 29.1 (739) | 21.7 (551) | 25.2 (640) | 42 (19.1) |
| 11791-X12 | 20U | 19"EIA | 11 (280) | 43.1 (1095) | 21.7 (551) | 12.2 (310) | 24 (10.9) |
| 11791-X18 | 20U | 19"EIA | 17 (430) | 43.1 (1095) | 21.7 (551) | 18.2 (462) | 26 (11.8) |
| 11791-X25 | 20U | 19"EIA | 24 (610) | 43.1 (1095) | 21.7 (551) | 25.2 (640) | 46 (20.9) |
| 11807-X12 | 26U | 19"EIA | 11 (280) | 53.6 (1361) | 21.7 (551) | 12.2 (310) | 25 (11.3) |
| 11807-X18 | 26U | 19"EIA | 17 (430) | 53.6 (1361) | 21.7 (551) | 18.2 (462) | 26 (11.8) |
| 11807-X25 | 26U | 19"EIA | 24 (610) | 53.6 (1361) | 21.7 (551) | 25.2 (640) | 50 (22.7) |
| 11792-X12 | 40U | 19"EIA | 11 (280) | 78.1 (1984) | 21.7 (551) | 12.2 (310) | 31 (14.1) |
| 11792-X18 | 40U | 19"EIA | 17 (430) | 78.1 (1984) | 21.7 (551) | 18.2 (462) | 33 (15.0) |
| 11792-X25 | 40U | 19"EIA | 24 (610) | 78.1 (1984) | 21.7 (551) | 25.2 (640) | 60 (27.2) |
| <hr/> | | | | | | | |
| 11793-X12 | 12U | 23" | 11 (280) | 29.1 (739) | 25.7 (653) | 12.2 (310) | 23 (10.4) |
| 11793-X18 | 12U | 23" | 17 (430) | 29.1 (739) | 25.7 (653) | 18.2 (462) | 25 (11.3) |
| 11793-X25 | 12U | 23" | 24 (610) | 29.1 (739) | 25.7 (653) | 25.2 (640) | 43 (19.5) |
| 11794-X12 | 20U | 23" | 11 (280) | 43.1 (1095) | 25.7 (653) | 12.2 (310) | 25 (11.3) |
| 11794-X18 | 20U | 23" | 17 (430) | 43.1 (1095) | 25.7 (653) | 18.2 (462) | 27 (12.2) |
| 11794-X25 | 20U | 23" | 24 (610) | 43.1 (1095) | 25.7 (653) | 25.2 (640) | 47 (21.3) |
| 11808-X12 | 26U | 23" | 11 (280) | 53.6 (1361) | 25.7 (653) | 12.2 (310) | 26 (11.8) |
| 11808-X18 | 26U | 23" | 17 (430) | 53.6 (1361) | 25.7 (653) | 18.2 (462) | 28 (12.7) |
| 11808-X25 | 26U | 23" | 24 (610) | 53.6 (1361) | 25.7 (653) | 25.2 (640) | 51 (23.1) |
| 11795-X12 | 40U | 23" | 11 (280) | 78.1 (1984) | 25.7 (653) | 12.2 (310) | 32 (14.5) |
| 11795-X18 | 40U | 23" | 17 (430) | 78.1 (1984) | 25.7 (653) | 18.2 (462) | 34 (15.4) |
| 11795-X25 | 40U | 23" | 24 (610) | 78.1 (1984) | 25.7 (653) | 25.2 (640) | 61 (27.7) |

X=Color: 1=Gray, 2=Computer Beige, 7=Black, E=Glacier White
 Note: Usable Depth is reduced at the top and bottom U to 8" (200 mm) pm -X12; 12" (300 mm) on -X18; and 19" (462 mm) on -X25 racks.

Wall-Mount Rack Accessory



Attached to the Standard Swing Gate Wall Rack. Creates a pathway from the wall to the front, side or rear of the equipment mounting space.

- Made from a polymer-blend material that is UL Rated for use in plenum spaces
- Flexible material holds bundles secure while also allowing easy entrance of additional cables
- Internal Diameter: 3" (80 mm)
- Finish: Black
- Kit includes 6 rings and mounting hardware

| Part Number | Description | Shipping Weight lb (kg) |
|-------------|-----------------------|-------------------------|
| 11799-001 | Set of 6 Rings, Black | 2 (0.9) |

For product CSI Specs, visit the Support & Downloads page on www.chatsworth.com.

US & Canada

+1-800-834-4969
 Toronto, Ontario, Canada
 +905-850-7770
chatsworth.com
techsupport@chatsworth.com

Latin America

+52-55-5203-7525
 Toll Free within Mexico
 01-800-01-7592
chatsworth.com.co

Europe

+44-1628-524-834
chatsworthproducts.co.uk

Middle East & Africa

Dubai, UAE
 +971-4-2602125
chatsworth.ae

Asia Pacific

+86 21 6880-0266
chatsworth.com.cn



CHATSWORTH
 PRODUCTS