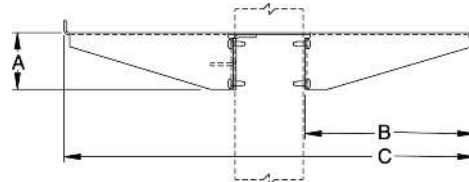
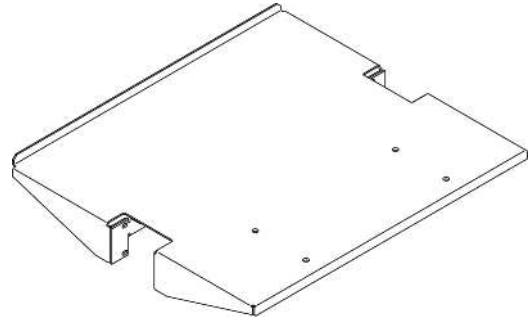


# Product Cut Sheet

## ADJUSTABLE MONITOR SHELF

Convenient for computer monitors or any equipment at any rack position. Mounting hardware not included.

- Made of strong, lightweight aluminum
- 19" version holds equipment up to 17.75"W x 18"D (450.9 mm x 460.0 mm)
- 23" version holds equipment up to 21.75"W x 18"D (552.5 mm x 460.0 mm)
- For use with 3"D (80 mm) double-sided racks only
- Supports 110 lb (49.9 kg) uniformly distributed



A 3.75" (95.3 mm)  
B 7.47" (189.7 mm)  
C 18.1" (459.7 mm)

Part Number	Description	Shipping Weight lb (kg)
11245-X19	Adjustable Monitor Shelf for 19" Rack	8 (3.6)
11245-X23	Adjustable Monitor Shelf for 23" Rack	8 (3.6)

X=color: 1=Gray, 2=Computer Beige, 5=Clear, 7=Black, E=Glacier White

800-834-4969 in U.S. & Canada • [www.chatsworth.com](http://www.chatsworth.com)



CHATSWORTH PRODUCTS

©2013 Chatsworth Products, Inc. All rights reserved. CPI, CPI Passive Cooling, GlobalFrame, MegaFrame, Saf-T-Grip, Seismic Frame, SlimFrame, TeraFrame, Cube-IT Plus, Evolution, OnTrac, Velocity and QuadraRack are federally registered trademarks of Chatsworth Products. eConnect and Simply Efficient are trademarks of Chatsworth Products. All other trademarks belong to their respective companies. 6/13